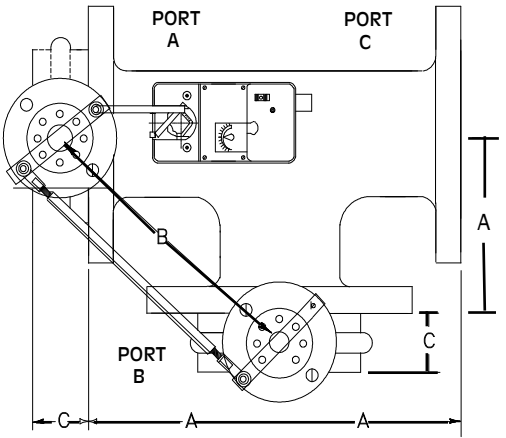


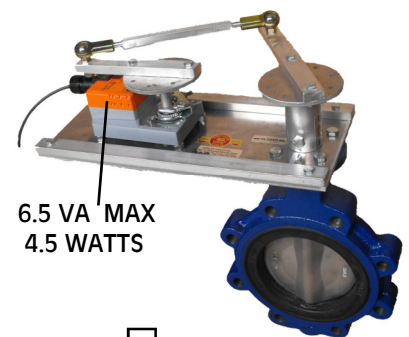
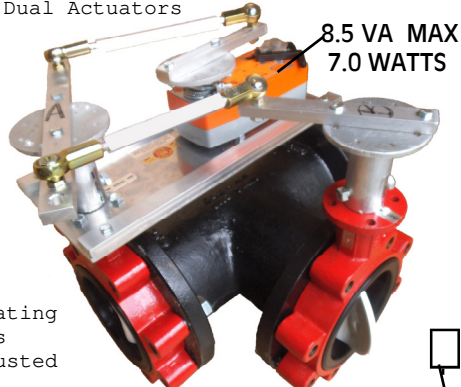
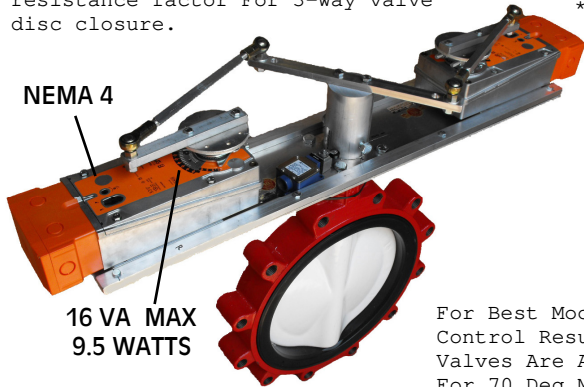
AUTOMATED BUTTERFLY VALVES WITH BELIMO ACTUATORS



System pressure is normally not a resistance factor For 3-way valve disc closure.

ACTUATOR PART # * = DUAL ACTUATORS	SIZE	A DIM.	B DIM.	C DIM.	Cv	Max. Close Rating	Bubble Leak Occur.
AMB, AFB SERIES	2	4.5	7 1/2	1 5/8	84	125	125#
AMB, AFB SERIES	2.5	5.0	8 1/4	1 3/4	163	125	125#
AMB, AFB SERIES	3	5.5	9 3/16	1 3/4	267	110	125#
AMB, AFB SERIES	4	6.5	10 3/4	2.0	496	110	50#
AMB, AFB SERIES	5	7.5	12 1/4	2 1/8	775	95	50#
AMB, AFB SERIES	6	8.0	13 15/16	2 1/8	1025	95	50#
GMB, EFB SERIES	8	9.0	14 7/8	2 1/2	1862	80	50#
GMB, EFB SERIES	10	11	17 3/4	2 1/2	2948	70	50#
GMB, EFB SERIES	12	12	19 3/4	3.0	4393	60	50#
*GMB or *EFB	14	14	21 3/4	3.0	5939	80	50#
*GMB or *EFB	16	15	24 3/4	4.0	7867	70	50#

* = Dual Actuators



For Best Modulating Control Results Valves Are Adjusted For 70 Deg Max Opening

Ratings are Based on Bray S31-120 Valve Bodies

Dual Spring Return Actuators For

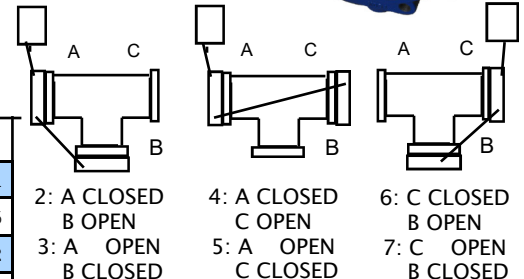
STANDARD VALVE BODY FEATURES

- EPDM Rubber liner
- Stainless Steel or Nylon Coated Disc
- Stainless Steel Shaft
- Full Threaded Lug
-

SIZE	CV							
2	144	84	61	43	27	16	7	1
2.5	282	163	107	67	43	24	11	1.5
3	461	267	154	96	61	35	15	2
4	841	496	274	171	109	62	27	3
5	1,376	775	428	268	170	98	43	5
6	1,850	1,025	567	354	225	129	56	6
8	3,316	1,862	1,081	680	421	241	102	12
10	5,430	2,948	1,710	1,076	667	382	162	19
12	8,077	4,393	2,563	1,594	1,005	555	235	27
14	10,538	5,939	3,384	2,149	1,320	756	299	34
16	13,966	7,867	4,483	2,847	1,749	1,001	397	45

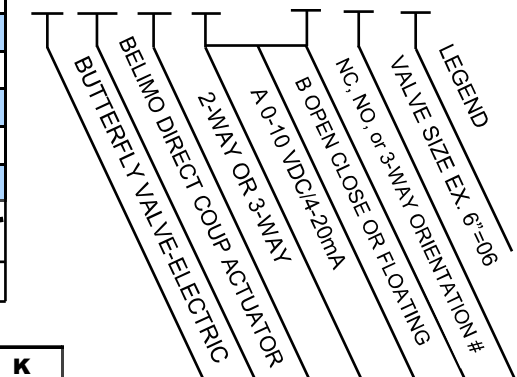
DIMENSIONS

SIZE	A	B	D	E	F	G	H	J	K
2"	3.69	1.62	2.84	5.50	3.54	.55	.39	1.25	1.32
2.5"	4.19	1.75	3.34	6.00	3.54	.55	.39	1.25	1.91
3"	4.88	1.75	4.03	6.25	3.54	.55	.39	1.25	2.55
4"	6.06	2.00	5.16	7.00	3.54	.63	.43	1.25	3.57
5"	7.12	2.12	6.16	7.50	3.54	.75	.51	1.25	4.63
6"	8.12	2.12	7.02	8.00	3.54	.75	.51	1.25	5.45
8"	10.50	2.50	9.47	9.50	5.91	.87	.63	1.25	7.45
10"	12.75	2.50	11.47	10.75	5.91	1.18	.87	2.00	9.53
12"	14.88	3.00	9.47	9.50	5.91	1.18	.87	2.00	11.47
14"	17.05	3.00	15.28	13.62	5.91	1.38	N/A	2.00	13.04
16"	19.21	4.00	17.41	14.75	5.91	1.38	N/A	2.00	14.85



3-WAY VALVE ORIENTATIONS

BVE -BMO -2W -Y -ZZ -06 -BS-B



Part Numbering System

BS = Valve Bump Switch
Aux = Actuator Aux Sw
SR = Spring Return
B = Bray P = Pratt
WP = NEMA 4 WeatherProof

Legend



WESLEY VALVE CO.

MFGRS OF AUTOMATED BUTTERFLY VALVES
3229 North L Street
Pensacola, FL 32505
PHN: (404) 351-8744
FAX: (404) 351-9340
www.wesleyvalve.com

NOW AVAILABLE 14" & 16" SPRING RETURN VALVE ASSEMBLIES

APPLICATIONS

- A. IDEALLY SUITED FOR CHILLER & COOLING TOWER ISOLATION
- B. COOLING TOWER MODULATING 3-WAY DIVERTING VALVE CONTROL

DIRECT COUPLED ACTION AS DESIGNED

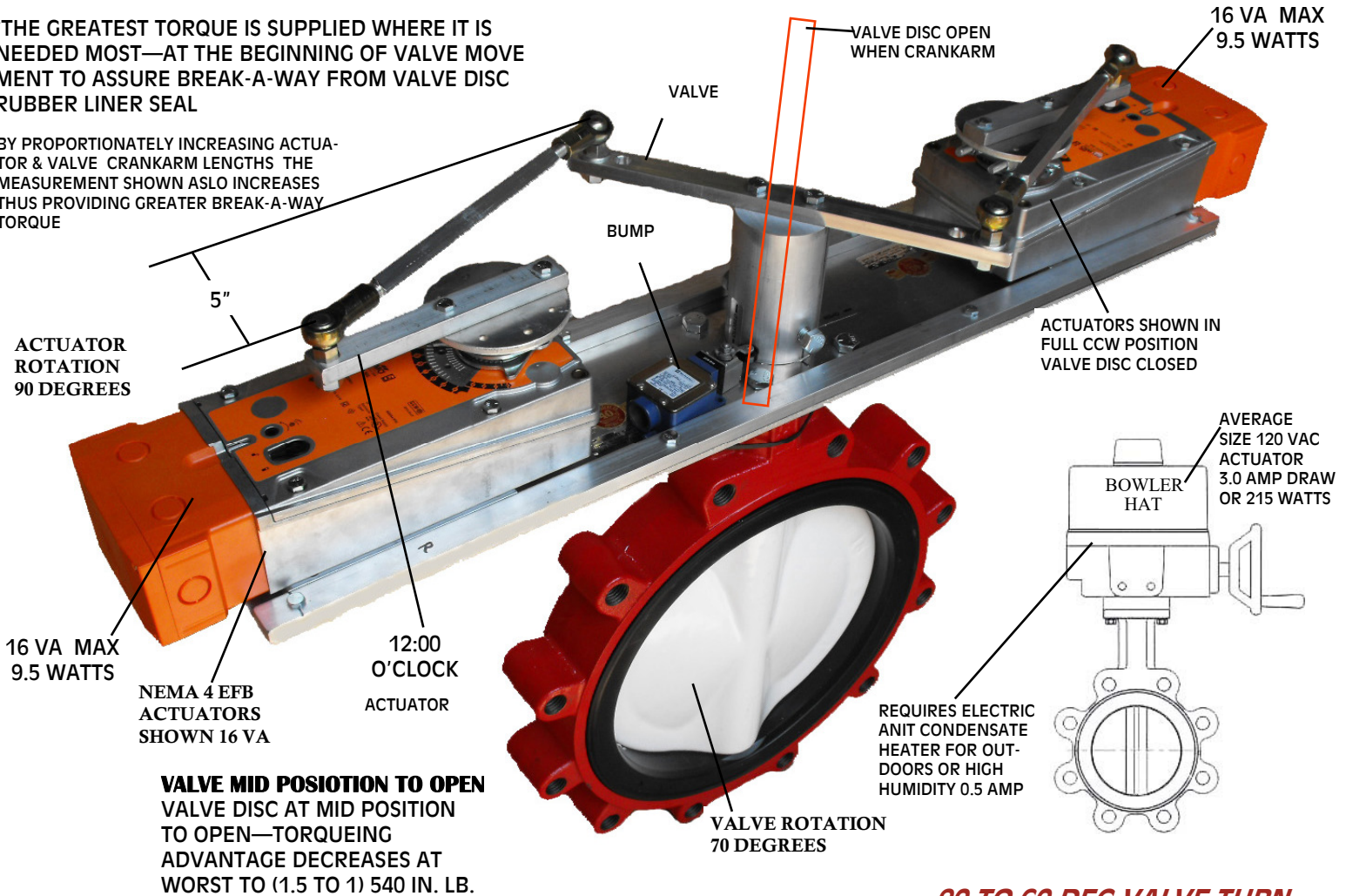
BELIMO SERIES EFB SPRING RETURN ACTUATOR
TORQUE RATING IS 270 IN. LB. DUAL ACTUATOR
TORQUE RATING IS 540 IN. LB.

REMOTE ROTARY ACTION

BREAK-A-WAY TORQUEING IS
5 TIMES GREATER DUE TO THE
LEVER ADVANTAGE OR 2700 IN. LB.

*THE GREATEST TORQUE IS SUPPLIED WHERE IT IS
NEEDED MOST—AT THE BEGINNING OF VALVE MOVE-
MENT TO ASSURE BREAK-A-WAY FROM VALVE DISC
RUBBER LINER SEAL

BY PROPORTIONATELY INCREASING ACTUA-
TOR & VALVE CRANKARM LENGTHS THE
MEASUREMENT SHOWN ASLO INCREASES
THUS PROVIDING GREATER BREAK-A-WAY
TORQUE



**90 TO 60 DEG VALVE TURN
ASSEMBLY INCREASES DISC
REPOSITIONS (RESOLUTION)
BY 50%**

BUTTERFLY VALVE 2-WAY VALVE ASSEMBLY

AUTOMATED BUTTERFLY VALVES WITH BELIMO ACTUATORS

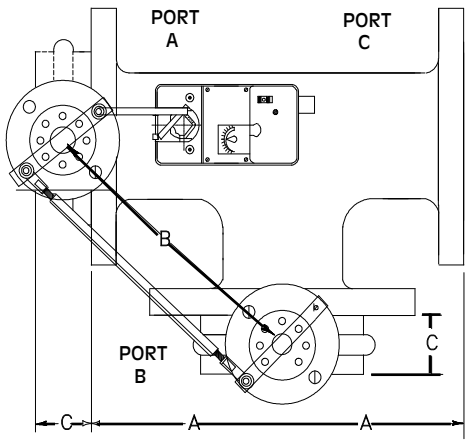
SPRING RETURN VALVE ASSEMBLIES AVAILABLE 2" THROUGH 16"



WESLEY VALVE CO.

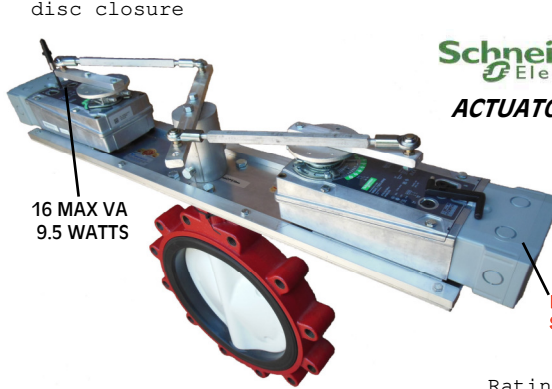
MFGRS OF AUTOMATED BUTTERFLY VALVES
3229 North L Street
Pensacola, FL 32505
PHN: (404) 351-8744 FAX: (404) 351-9340
www.wesleyvalve.com

AUTOMATED BUTTERFLY VALVES Schneider Electric SmartX ACTUATORS



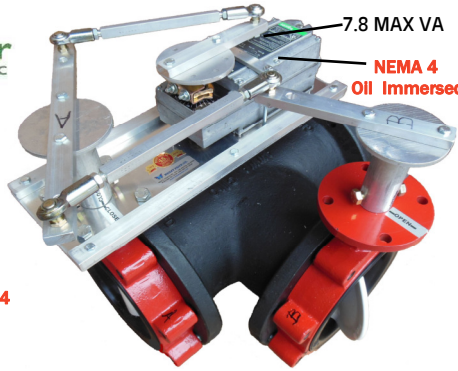
System pressure is normally not a resistance factor For 3-way valve disc closure

ACTUATOR PART # * = DUAL ACTUATORS	SIZE	A DIM.	B DIM.	C DIM.	Cv	Max. Close Rating	Bubble Leak Occur.
Mx41-615x, Mx4x-715x, 717x	2	4.5	7 1/2	1 5/8	84	125	125#
Mx41-615x, Mx4x-715x, 717x	2.5	5.0	8 1/4	1 3/4	163	125	125#
Mx41-615x, Mx4x-715x, 717x	3	5.5	9 3/16	1 3/4	267	110	125#
Mx41-615x, Mx4x-715x, 717x	4	6.5	10 3/4	2.0	496	110	50#
Mx41-615x, Nx4x-715x, 717x	5	7.5	12 1/4	2 1/8	775	95	50#
Mx41-615x, Mx4x-715x, 717x	6	8.0	13 15/16	2 1/8	1025	85	50#
Mx41-634x, Mx41-730x	8	9.0	14 7/8	2 1/2	1862	85	50#
Mx41-634x, Mx41-730x	10	11	17 3/4	2 1/2	2948	75	50#
Mx41-634x, *Mx41-730x	12	12	19 3/4	3.0	4393	60	50#
*Mx41-634x, *Mx41-730x	14	14	21 3/4	3.0	5939	70	50#
*Mx41-634x, *Mx41-730x	16	15	24 3/4	4.0	7867	60	50#

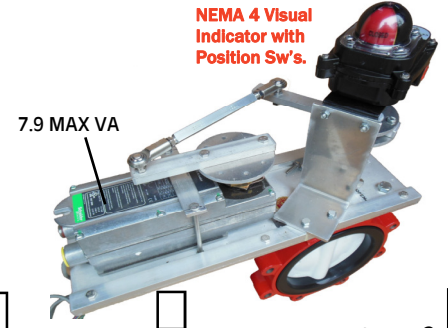


16 MAX VA
9.5 WATTS

Schneider Electric
ACTUATORS



7.8 MAX VA
NEMA 4
Oil Immersed



7.9 MAX VA

NEMA 4 Visual
Indicator with
Position Sw's.

Ratings are Based on Bray S31 & Pratt BF-8688-1 Valve Bodies

For Best Modulating Control Results Valves Are Adjusted For 70 Deg Max Opening

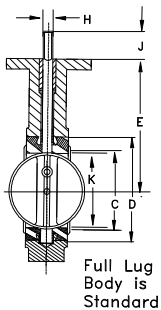
STANDARD VALVE BODY FEATURES

- EPDM Rubber liner
- Stainless Steel or Nylon Coated Disc
- Stainless Steel Shaft
- Full Threaded Lug
-

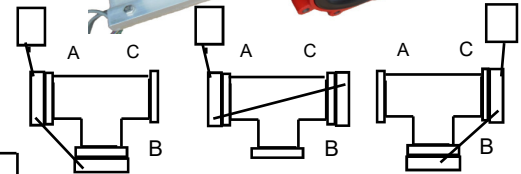
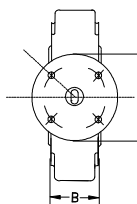
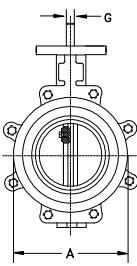
SIZE	CV VALUES								
2	144	84	61	43	27	16	7	1	
2.5	282	163	107	67	43	24	11	1.5	
3	461	267	154	96	61	35	15	2	
4	841	496	274	171	109	62	27	3	
5	1,376	775	428	268	170	98	43	5	
6	1,850	1,025	567	354	225	129	56	6	
8	3,316	1,862	1,081	680	421	241	102	12	
10	5,430	2,948	1,710	1,076	667	382	162	19	
12	8,077	4,393	2,563	1,594	1,005	555	235	27	
14	10,538	5,939	3,384	2,149	1,320	756	299	34	
16	13,966	7,867	4,483	2,847	1,749	1,001	397	45	

DIMENSIONS

SIZE	A	B	D	E	F	G	H	J	K
2"	3.69	1.62	2.84	5.50	3.54	.55	.39	1.25	1.32
2.5"	4.19	1.75	3.34	6.00	3.54	.55	.39	1.25	1.91
3"	4.88	1.75	4.03	6.25	3.54	.55	.39	1.25	2.55
4"	6.06	2.00	5.16	7.00	3.54	.63	.43	1.25	3.57
5"	7.12	2.12	6.16	7.50	3.54	.75	.51	1.25	4.63
6"	8.12	2.12	7.02	8.00	3.54	.75	.51	1.25	5.45
8"	10.50	2.50	9.47	9.50	5.91	.87	.63	1.25	7.45
10"	12.75	2.50	11.47	10.75	5.91	1.18	.87	2.00	9.53
12"	14.88	3.00	9.47	9.50	5.91	1.18	.87	2.00	11.47
14"	17.05	3.00	15.28	13.62	5.91	1.38	N/A	2.00	13.04
16"	19.21	4.00	17.41	14.75	5.91	1.38	N/A	2.00	14.85

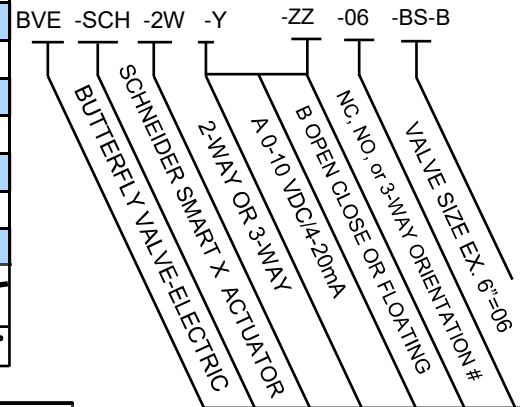


Full Lug Body is Standard



- 2: A CLOSED B OPEN
- 3: A OPEN B CLOSED
- 4: A CLOSED C OPEN
- 5: A OPEN C CLOSED
- 6: C CLOSED B OPEN
- 7: C OPEN B CLOSED

3-WAY VALVE ORIENTATIONS



Part Numbering System

- BS = Valve Bump Switch
- VPI = Visual Pos Indicator
- Aux = Actuator Aux Sw
- SR = Spring Return
- B = Bray P = Pratt
- WP = NEMA 4 WeatherProof



WESLEY VALVE CO.

MFGRS OF AUTOMATED BUTTERFLY VALVES
3229 North L Street
Pensacola, FL 32505
PHN: (404) 351-8744
FAX: (404) 351-9340
www.wesleyvalve.com

SPRING RETURN VALVE ASSEMBLIES

2 TO 16" AVAILABLE

APPLICATIONS

- A. IDEALLY SUITED FOR CHILLER & COOLING TOWER ISOLATION
- B. COOLING TOWER MODULATING 3-WAY DIVERTING VALVE CONTROL

DIRECT COUPLED ACTION AS DESIGNED

SCHNEIDER ELECTRIC SERIES MX41-717X SPRING RETURN ACTUATOR'S TORQUE RATING IS 150 IN. LB.
DUAL ACTUATOR TORQUE RATING IS 300 IN. LB.

REMOTE ROTARY ACTION

BREAK-A-WAY TORQUEING
ADVANTAGE QUADRUPLES TO

VALVE MID POSITION TO OPEN

VALVE DISC AT MID POSITION TO OPEN—TORQUEING
ADVANTAGE DECREASES AT WORST TO (1.5 TO 1) 450 IN. LB.
OR 900 IN. LB. FOR DUAL ACTUATORS

21 MAX VA
9.5 WATTS
120 VAC

12:00
O'CLOCK

ACTUATORS SHOWN IN
FULL CCW POSITION
VALVE DISC CLOSED

VALVE
CRANKARM

Schneider
Electric

ACTUATORS

ACTUATOR ROTATION
90 DEGREES

4"

BY PROPORTIONATELY INCREASING ACTUATOR & VALVE CRANKARM LENGTHS THE MEASUREMENT SHOWN ASLO INCREASES THUS PROVIDING GREATER BREAK-A-WAY TORQUE

16 MAX VA
9.5 WATTS
24 VAC

TEMPORARY STALL TORQUE FOR THIS ACUATOR IS OVER 400 IN. LB. OR OVER 800 IN. LB. FOR DUAL ACTUATORS. MULTIPLIED BY THE LEVER ADVANTAGE OF 4 IS OVER 3200 IB. LB.

*THE GREATEST TORQUE IS SUPPLIED WHERE IT IS NEEDED MOST—AT THE BEGINNING OF VALVE MOVEMENT TO ASSURE BREAK-A-WAY FROM VALVE DISC RUBBER LINER SEAL

VALVE ROTATION
70 DEGREES

**90 TO 60 DEG VALVE TURN
ASSEMBLY INCREASES DISC**

BUTTERFLY VALVE

2-WAY VALVE ASSEMBLY

AUTOMATED BUTTERFLY VALVES WITH Schneider Electric SmartX ACTUATORS

SPRING RETURN VALVE ASSEMBLIES AVAILABLE 2" THROUGH 12"



WESLEY VALVE CO.

MFGRS OF AUTOMATED BUTTERFLY VALVES
3229 North L Street
Pensacola, FL 32505
PHN: (404) 351-8744 FAX: (404) 351-9340
www.wesleyvalve.com

REPLACING A FAILED BOWLER HAT ACTUATOR?

**CONSIDER RETROFITTING IT WITH THE MORE
RELIABLE Schneider Electric SmartX
ACTUATOR ASSEMBLY AS SHOWN ABOVE**