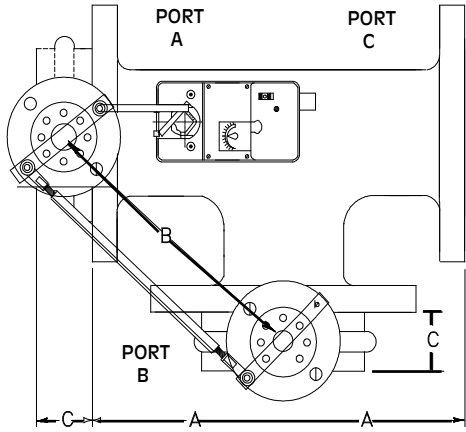


AUTOMATED BUTTERFLY VALVES WITH



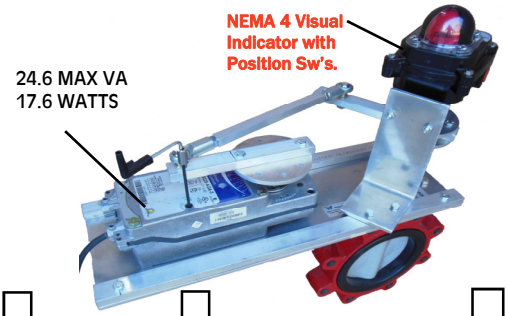
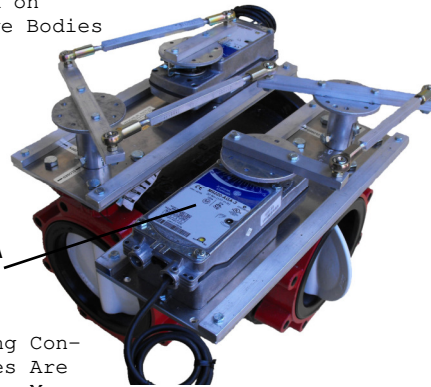
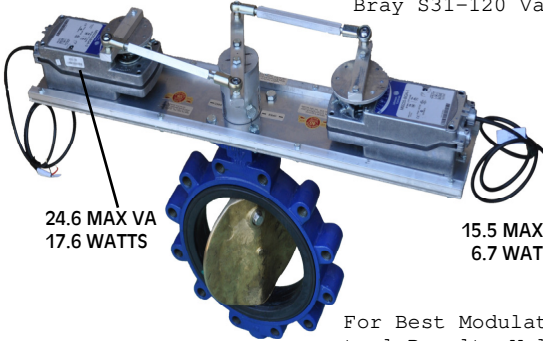
ACTUATORS



System pressure is normally not a resistance factor For 3-way valve

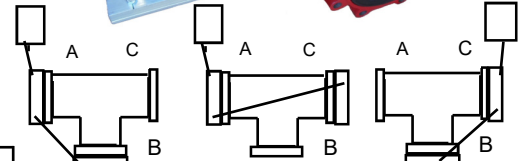
ACTUATOR PART # * = DUAL ACTUATORS	SIZE	A DIM.	B DIM.	C DIM.	Cv	Max. Close Rating	Bubble Leak Occur.
M9116-xGA-2, M9220-xGA-3	2	4.5	7 1/2	1 5/8	84	125	125#
M9116-xGA-2, M9220-xGA-3	2.5	5.0	8 1/4	1 3/4	163	125	125#
M9116-xGA-2, M9220-xGA-3	3	5.5	9 3/16	1 3/4	267	110	125#
M9116-xGA-2, M9220-xGA-3	4	6.5	10 3/4	2.0	496	110	50#
M9116-xGA-2, M9220-xGA-3	5	7.5	12 1/4	2 1/8	775	95	50#
M9116-xGA-2, M9220-xGA-3	6	8.0	13 15/16	2 1/8	1025	85	50#
M9132-xGA-2, *M9220-xGA-3	8	9.0	14 7/8	2 1/2	1862	85	50#
M9132-xGA-2, *M9220-xGA-3	10	11	17 3/4	2 1/2	2948	75	50#
M9132-xGA-2, *M9220-xGA-3	12	12	19 3/4	3.0	4393	60	50#
*M9132-xGA-2 (3) on 3-Way	14	14	21 3/4	3.0	5939	70	50#
*M9132-xGA-2 (3) on 3-Way	16	15	24 3/4	4.0	7867	60	50#

Ratings are Based on Bray S31-120 Valve Bodies



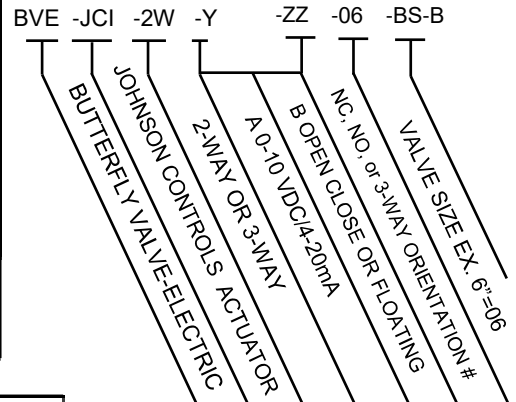
*Dual Spring Return Actuators For 8", 10", & 12" Valves

For Best Modulating Control Results Valves Are Adjusted For 70 Deg Max



- 2: A CLOSED B OPEN
- 3: A OPEN B CLOSED
- 4: A CLOSED C OPEN
- 5: A OPEN C CLOSED
- 6: C CLOSED B OPEN
- 7: C OPEN B CLOSED

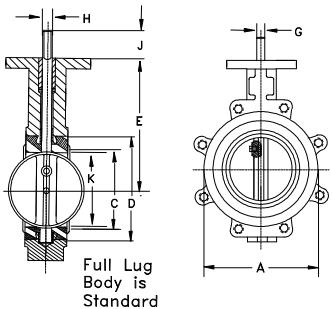
3-WAY VALVE ORIENTATIONS



Part Numbering System
 BS = Valve Bump Switch
 VPI = Visual Pos Indicator
 Aux = Actuator Aux Sw
 SR = Spring Return
 B = Bray P = Pratt
 WP = NEMA 4 WeatherProof

STANDARD VALVE BODY FEATURES

- EPDM Rubber liner
- Stainless Steel or Nylon Coated Disc
- Stainless Steel Shaft
- Full Threaded Lug



File:JCIDirectCoupData

SIZE	CV								
2	144	84	61	43	27	16	7	1	
2.5	282	163	107	67	43	24	11	1.5	
3	461	267	154	96	61	35	15	2	
4	841	496	274	171	109	62	27	3	
5	1,376	775	428	268	170	98	43	5	
6	1,850	1,025	567	354	225	129	56	6	
8	3,316	1,862	1,081	680	421	241	102	12	
10	5,430	2,948	1,710	1,076	667	382	162	19	
12	8,077	4,393	2,563	1,594	1,005	555	235	27	
14	10,538	5,939	3,384	2,149	1,320	756	299	34	
16	13,966	7,867	4,483	2,847	1,749	1,001	397	45	

DIMENSIONS

SIZE	A	B	D	E	F	G	H	J	K
2"	3.69	1.62	2.84	5.50	3.54	.55	.39	1.25	1.32
2.5"	4.19	1.75	3.34	6.00	3.54	.55	.39	1.25	1.91
3"	4.88	1.75	4.03	6.25	3.54	.55	.39	1.25	2.55
4"	6.06	2.00	5.16	7.00	3.54	.63	.43	1.25	3.57
5"	7.12	2.12	6.16	7.50	3.54	.75	.51	1.25	4.63
6"	8.12	2.12	7.02	8.00	3.54	.75	.51	1.25	5.45
8"	10.50	2.50	9.47	9.50	5.91	.87	.63	1.25	7.45
10"	12.75	2.50	11.47	10.75	5.91	1.18	.87	2.00	9.53
12"	14.88	3.00	9.47	9.50	5.91	1.18	.87	2.00	11.47
14"	17.05	3.00	15.28	13.62	5.91	1.38	N/A	2.00	13.04
16"	19.21	4.00	17.41	14.75	5.91	1.38	N/A	2.00	14.85



WESLEY VALVE CO.

MFGRS OF AUTOMATED BUTTERFLY VALVES
 3229 North L Street
 Pensacola, FL 32505
 PHN: (404) 351-8744
 FAX: (404) 351-9340

www.wesleyvalve.com