



-NOW AVAILABLE FOR SHIPMENT-

AUTOMATED BUTTERFLY VALVES WITH **ACTUATORS**

SPRING RETURN VALVE ASSEMBLIES AVAILABLE 2" THROUGH 12"

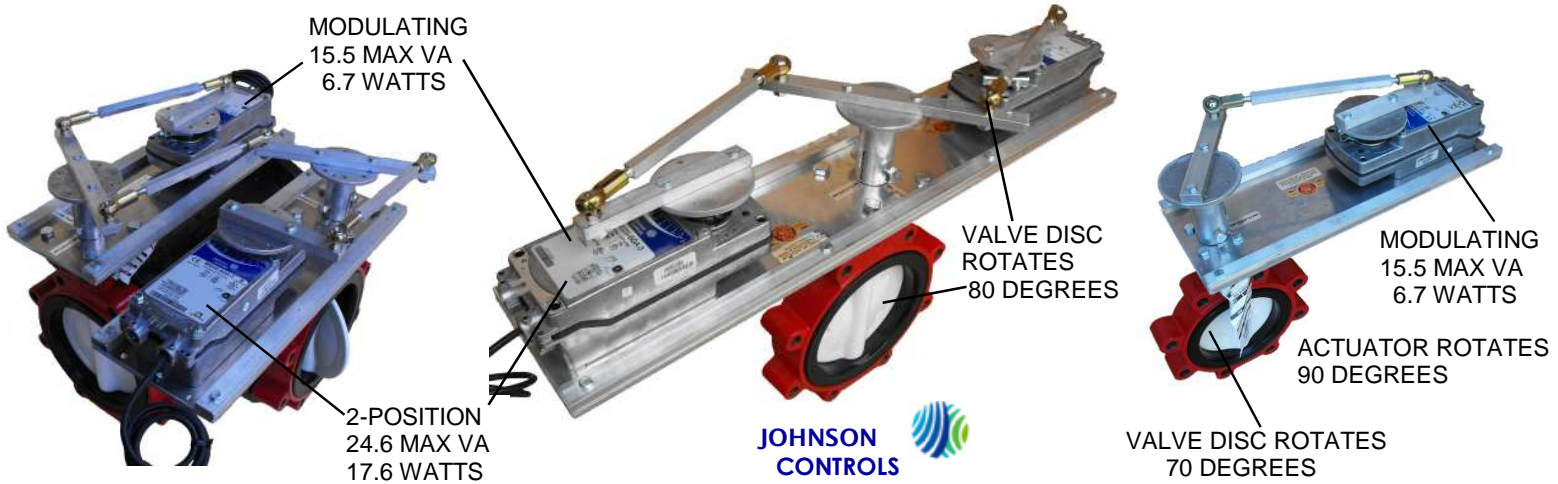
M9220 SPRING RETURN ACTUATORS

PRECISE CONTROL REQUIRES NUMEROUS MODULATING VALVE DISC REPOSITIONS —

90 TO 60 DEGREE (1.5 TO 1 RATIO) VALVE TURN ASSEMBLY INCREASES VALVE DISC POSITIONS (RESOLUTION) BY 50%

NEMA 2 RATED ACTUATOR HOUSING

ACTUATOR HAS 4 TO 1 LEVER OR TORQUE ADVANTAGE FOR VALVE DISC BREAK-A-WAY FROM RUBBER LINER



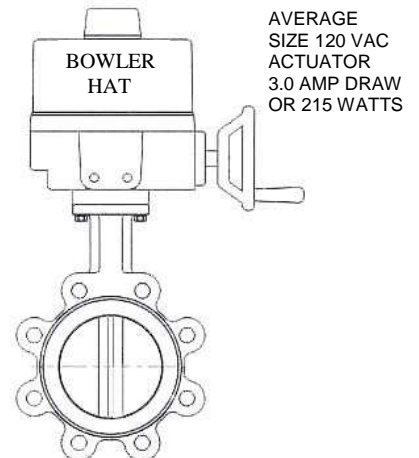
ADVANTAGE OF SELECTING A VALVE ASSEMBLY WITH

 **M9220 ACTUATORS**

- A. Valve Assembly at Low Cost
- B.) Superior Modulating Resolution for 0-10 VDC/4-20mA Control Signals
- C.) Minimal Replacement of Actuator During Warranty Period
- D.) 20 Year Life Expectancy

DID YOU KNOW ?

WESLEY VALVE CO. IS THE ONLY SUPPLIER OF AUTOMATED BUTTERFLY VALVE ASSEMBLIES WITH JOHNSON ACTUATORS LARGER THAN 5" (SIX INCHES)



90 DEG 1/4 TURN VALVE ASSEMBLIES WITH BOWLER HAT TYPE ACTUATORS ARE NOT RECOMMENDED WHERE TIGHT & STABLE FLOW CONTROL IS REQUIRED



WESLEY VALVE CO.

MFGRS OF AUTOMATED BUTTERFLY VALVES
4938 S. Atlanta Rd., Ste. 100
Atlanta, GA 30339
PHN: (404) 351-8744 FAX: (404) 351-9340
www.wesleyvalve.com

SPRING RETURN VALVE ASSEMBLIES

2 TO 12" AVAILABLE

APPLICATIONS

- A. IDEALLY SUITED FOR CHILLER & COOLING TOWER ISOLATION
- B. COOLING TOWER MODULATING 3-WAY DIVERTING VALVE CONTROL

DIRECT COUPLED ACTION AS DESIGNED

JOHNSON CONTROLS SERIES M9220 SPRING RETURN ACTUATOR TORQUE RATING IS 177 IN. LB. DUAL ACTUATOR TORQUE RATING IS 354 IN. LB.

REMOTE ROTARY ACTION

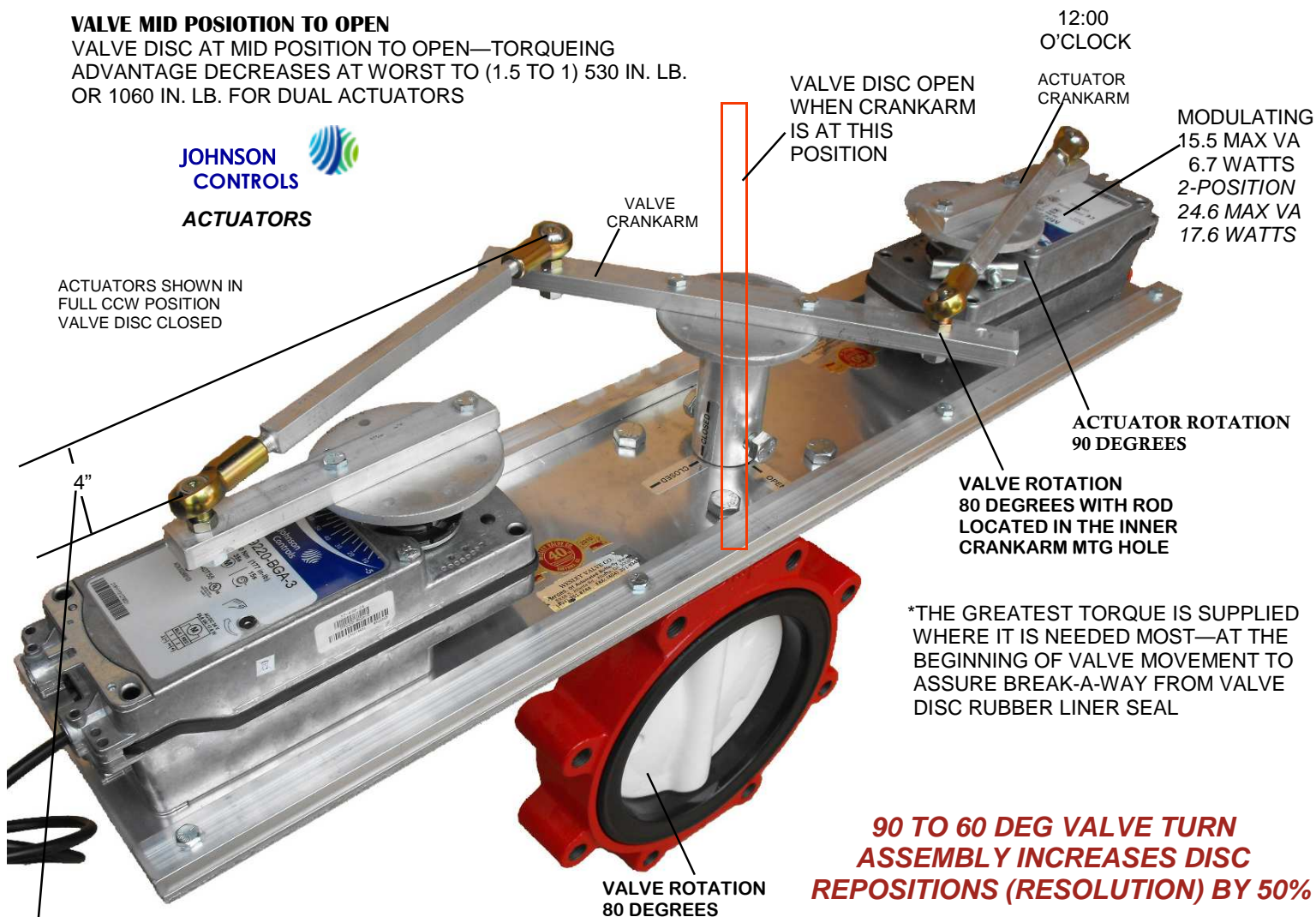
BREAK-A-WAY TORQUEING ADVANTAGE QUADRUPLES TO 1416 IN. LB.

VALVE MID POSITION TO OPEN

VALVE DISC AT MID POSITION TO OPEN—TORQUEING ADVANTAGE DECREASES AT WORST TO (1.5 TO 1) 530 IN. LB. OR 1060 IN. LB. FOR DUAL ACTUATORS



ACTUATORS SHOWN IN FULL CCW POSITION VALVE DISC CLOSED



*THE GREATEST TORQUE IS SUPPLIED WHERE IT IS NEEDED MOST—AT THE BEGINNING OF VALVE MOVEMENT TO ASSURE BREAK-A-WAY FROM VALVE DISC RUBBER LINER SEAL

90 TO 60 DEG VALVE TURN ASSEMBLY INCREASES DISC REPOSITIONS (RESOLUTION) BY 50%

BY PROPORTIONATELY INCREASING ACTUATOR & VALVE CRANKARM LENGTHS THE MEASUREMENT SHOWN ALSO INCREASES THUS PROVIDING GREATER BREAK-A-WAY

BUTTERFLY VALVE 2-WAY VALVE ASSEMBLY

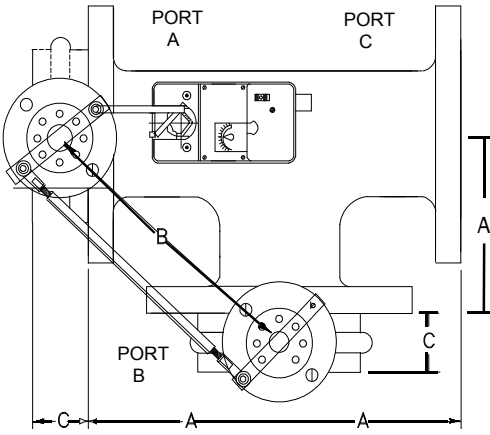
AUTOMATED BUTTERFLY VALVES WITH  **DIRECT ACTUATORS**

SPRING RETURN VALVE ASSEMBLIES AVAILABLE 2" THROUGH 12"



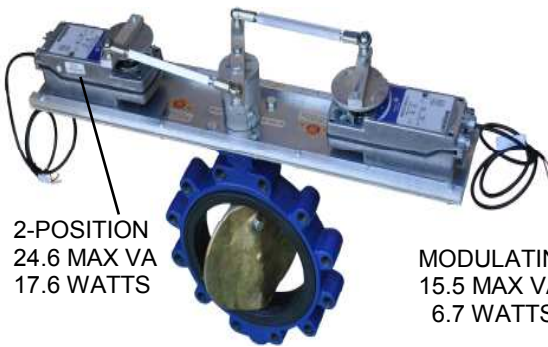
MFGRS OF AUTOMATED BUTTERFLY VALVES
4938 S. Atlanta Rd., Ste. 100
Atlanta, GA 30339
PHN: (404) 351-8744 FAX: (404) 351-9340
WWW.WESLEYVALVE.COM

AUTOMATED BUTTERFLY VALVES WITH

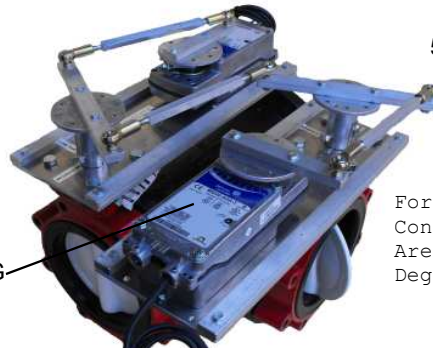


System pressure is normally not a resistance factor For 3-way valve

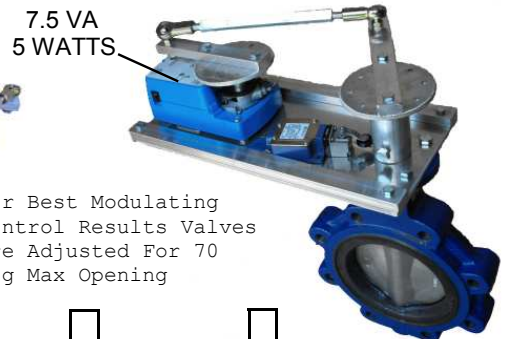
ACTUATOR PART # * = DUAL ACTUATORS	SIZE	A DIM.	B DIM.	C DIM.	Cv	Max. Close Rating	Bubble Leak Occur.
M9116-xGA-2, M9220-xGA-3	2	4.5	7 1/2	1 5/8	84	125	125#
M9116-xGA-2, M9220-xGA-3	2.5	5.0	8 1/4	1 3/4	163	125	125#
M9116-xGA-2, M9220-xGA-3	3	5.5	9 3/16	1 3/4	267	110	125#
M9116-xGA-2, M9220-xGA-3	4	6.5	10 3/4	2.0	496	110	50#
M9116-xGA-2, M9220-xGA-3	5	7.5	12 1/4	2 1/8	775	95	50#
M9116-xGA-2, M9220-xGA-3	6	8.0	13 15/16	2 1/8	1025	85	50#
M9132-xGA-2, *M9220-xGA-3	8	9.0	14 7/8	2 1/2	1862	85	50#
M9132-xGA-2, *M9220-xGA-3	10	11	17 3/4	2 1/2	2948	75	50#
M9132-xGA-2, *M9220-xGA-3	12	12	19 3/4	3.0	4393	60	50#
*M9132-xGA-2 (3) on 3-Way	14	14	21 3/4	3.0	5939	70	50#
*M9132-xGA-2 (3) on 3-Way	16	15	24 3/4	4.0	7867	60	50#



2-POSITION
24.6 MAX VA
17.6 WATTS



MODULATING
15.5 MAX VA
6.7 WATTS



7.5 VA
5 WATTS
For Best Modulating Control Results Valves Are Adjusted For 70 Deg Max Opening

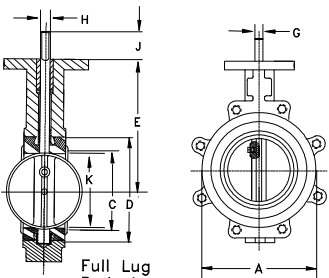
*Dual Spring Return Actuators For 8", 10", & 12" Valves

Ratings are Based on Bray S31-119 & Keystone AR2 Valve Bodies

STANDARD VALVE BODY FEATURES

- EPDM Rubber liner
- Stainless Steel or Nylon Coated Disc
- Stainless Steel Shaft
- Full Threaded Lug

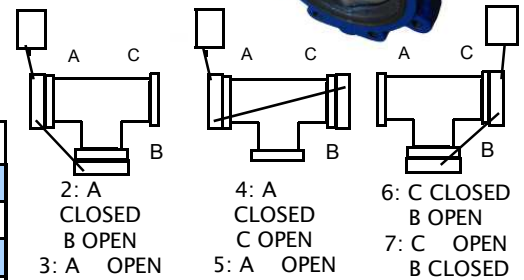
SIZE	CV VALUES							
2	144	84	61	43	27	16	7	1
2.5	282	163	107	67	43	24	11	1.5
3	461	267	154	96	61	35	15	2
4	841	496	274	171	109	62	27	3
5	1,376	775	428	268	170	98	43	5
6	1,850	1,025	567	354	225	129	56	6
8	3,316	1,862	1,081	680	421	241	102	12
10	5,430	2,948	1,710	1,076	667	382	162	19
12	8,077	4,393	2,563	1,594	1,005	555	235	27
14	10,538	5,939	3,384	2,149	1,320	756	299	34
16	13,966	7,867	4,483	2,847	1,749	1,001	397	45



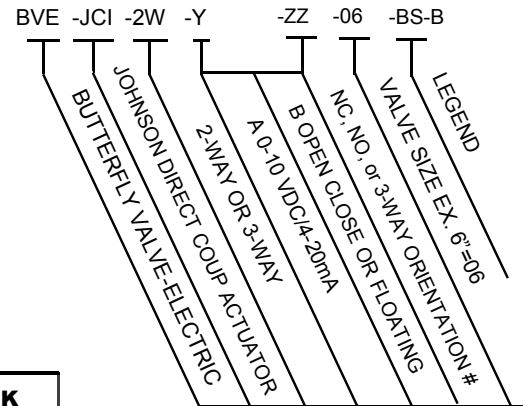
Full Lug Body is Standard

DIMENSIONS

SIZE	A	B	D	E	F	G	H	J	K
2"	3.69	1.62	2.84	5.50	3.54	.55	.39	1.25	1.32
2.5"	4.19	1.75	3.34	6.00	3.54	.55	.39	1.25	1.91
3"	4.88	1.75	4.03	6.25	3.54	.55	.39	1.25	2.55
4"	6.06	2.00	5.16	7.00	3.54	.63	.43	1.25	3.57
5"	7.12	2.12	6.16	7.50	3.54	.75	.51	1.25	4.63
6"	8.12	2.12	7.02	8.00	3.54	.75	.51	1.25	5.45
8"	10.50	2.50	9.47	9.50	5.91	.87	.63	1.25	7.45
10"	12.75	2.50	11.47	10.75	5.91	1.18	.87	2.00	9.53
12"	14.88	3.00	9.47	9.50	5.91	1.18	.87	2.00	11.47
14"	17.05	3.00	15.28	13.62	5.91	1.38	N/A	2.00	13.04
16"	19.21	4.00	17.41	14.75	5.91	1.38	N/A	2.00	14.85



3-WAY VALVE ORIENTATIONS



Legend

BS = Valve Bump Switch
B = Bray, K = Keystone
RF = Retrofit Kit



WESLEY VALVE CO.

MFGRS OF AUTOMATED BUTTERFLY VALVES
4938 S. Atlanta Rd., Ste. 100
Atlanta, GA 30339
PHN: (404) 351-8744
FAX: (404) 351-9340
www.wesleyvalve.com