



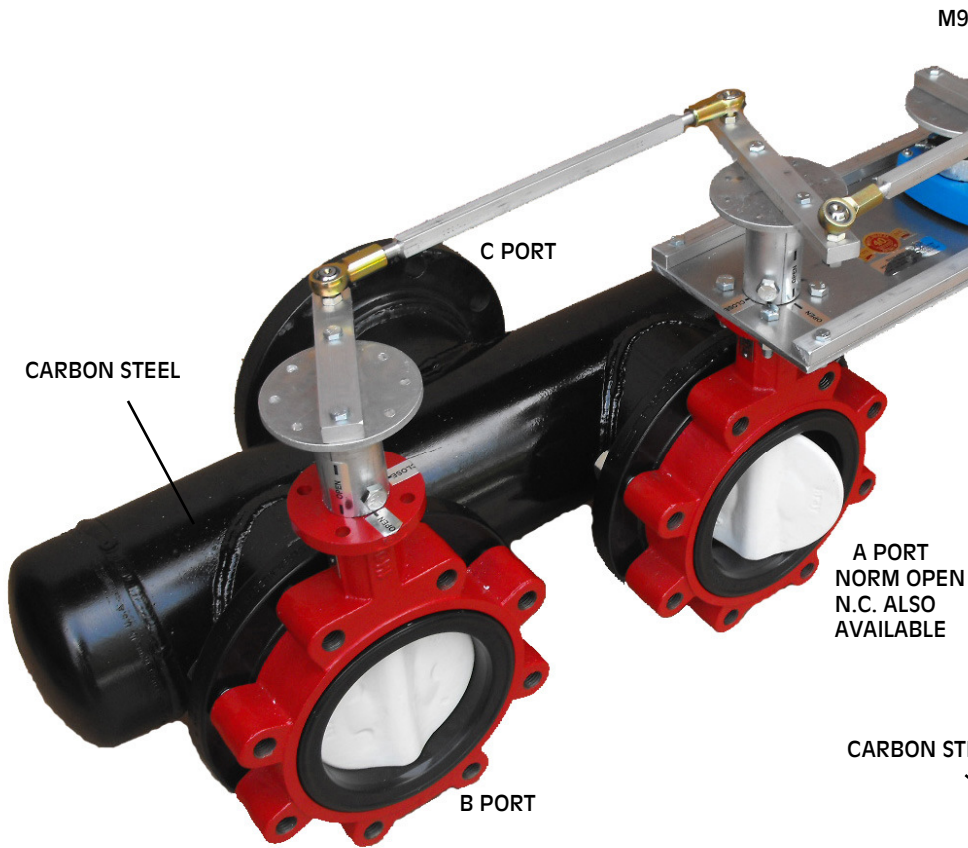
-NOW AVAILABLE FOR SHIPMENTTHIP-

REPLACEMENT FOR



OBSOLETE V-5650 3-WAY VALVE

**ALSO REPLACES OBSOLETE
V-210 , V-330, & V5820 3-WAY VALVES**



M9116 ACTUATOR

ALSO AVAILABLE WITH
M9220 SPRING RE-
TURN ACTUATOR

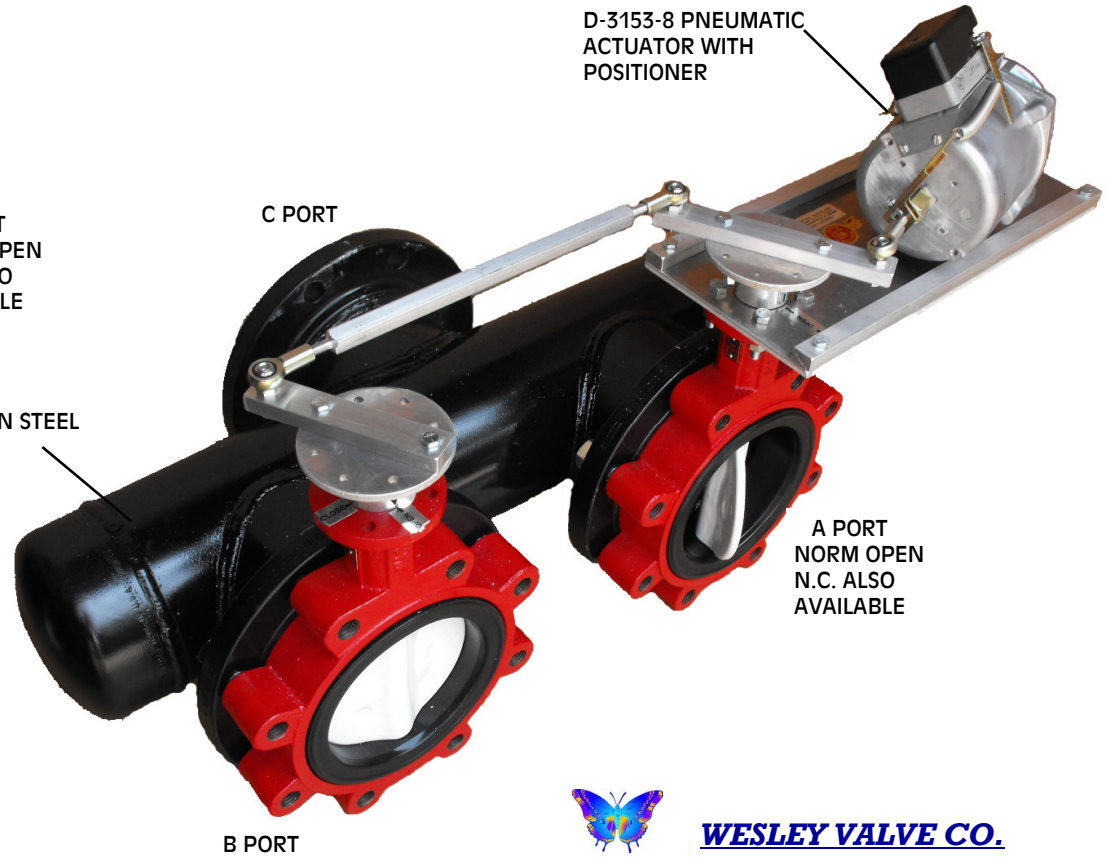
7.5 VA
5 WATTS

CARBON STEEL

C PORT

A PORT
NORM OPEN
N.C. ALSO
AVAILABLE

B PORT



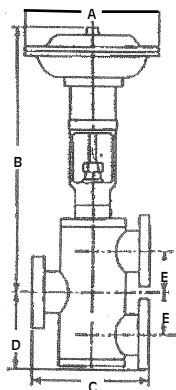
D-3153-8 PNEUMATIC
ACTUATOR WITH
POSITIONER

CARBON STEEL

C PORT

A PORT
NORM OPEN
N.C. ALSO
AVAILABLE

B PORT



OBSOLETE JCI V-5650



WESLEY VALVE CO.

MFGRS OF AUTOMATED BUTTERFLY VALVES
3229 North L Street
Pensacola, FL 32505

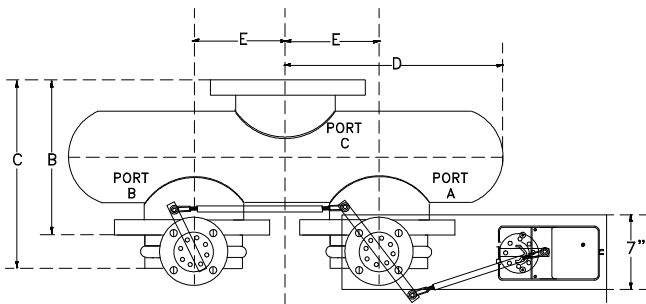
PHN: (404) 351-8744 FAX: (404) 351-9340

www.wesleyvalve.com

REPLACEMENT FOR



OBSOLETE V-5650 VALVE



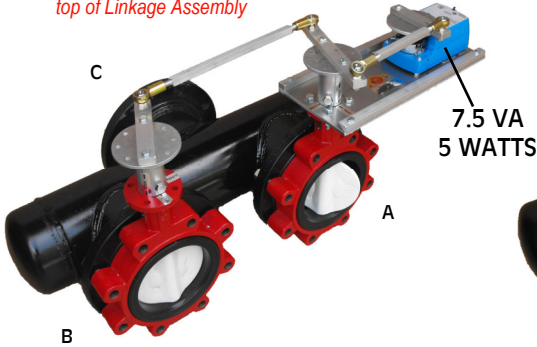
A DIMENSION FOR M9220 ELECTRIC ACTUATOR
SUBTRACT 4" FOR M9116 ELECTRIC ACTUATOR
SUBTRACT 3" FOR D-3153-5 PNEUMATIC ACTUATOR

VALVE SIZE IN.	MAX A DIM.	B DIM.	BRAY *C DIM.	KeyS *C DIM.	D DIM.	*E DIM.	Outer Flange Diameter	Max Close
2.5	19 5/16	7 3/8	9 1/8	9 3/16	10 1/2	4	7	125#
3	20 7/16	8 1/2	10 1/4	10 5/16	10 1/2	4 3/8	7 1/2	100#
4	22 3/16	10	12	12 1/16	12 3/4	5 1/4	9	90#
5	23 1/2	11 1/8	13 1/4	13 3/8	14 1/2	6 3/16	10	85#
6	25	12 5/8	14 3/4	14 7/8	16	7 1/4	11	75#

System pressure is normally not a resistance factor For 3-Way Valve Disc Closure.

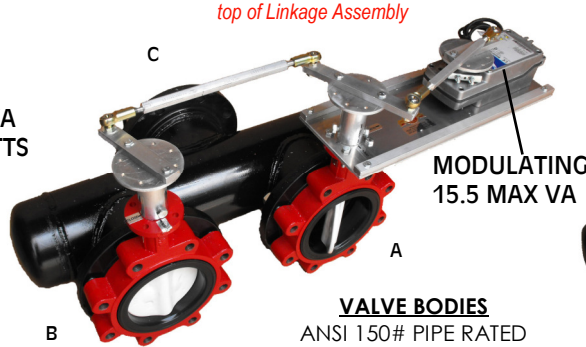
Ratings & Dimensions are Based on Bray S31-119 & Keystone 222 Valve Bodies

8" From top of Flange to top of Linkage Assembly



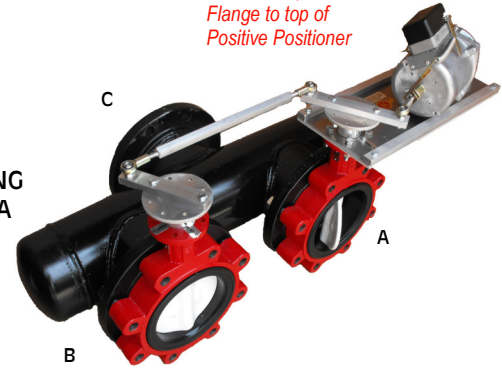
ASSEMBLY WITH JCI M9116 NON SPRING RETURN ACTUATOR

8.5" From top of Flange to top of Linkage Assembly



ASSEMBLY WITH JCI M9220 SPRING RETURN ACTUATOR

11" From top of Flange to top of Positive Positioner



ASSEMBLY WITH JCI D-3153-5 PNEUMATIC ACTUATOR

VALVE BODIES
ANSI 150# PIPE RATED

ALSO REPLACES OBSOLETE V-210, V-330 & V5820 3-WAY VALVES

STANDARD VALVE FEATURES

- EPDM Rubber liner
- Stainless Steel or Nylon Coated Disc
- Stainless Steel Shaft
- Full Threaded Lug
- Carbon Steel Pipe Tee
-

SIZE	CV VALUES							
2.5	282	163	107	67	43	24	11	1.5
3	461	267	154	96	61	35	15	2
4	841	496	274	171	109	62	27	3
5	1,376	775	428	268	170	98	43	5
6	1,850	1,025	567	354	225	129	56	6

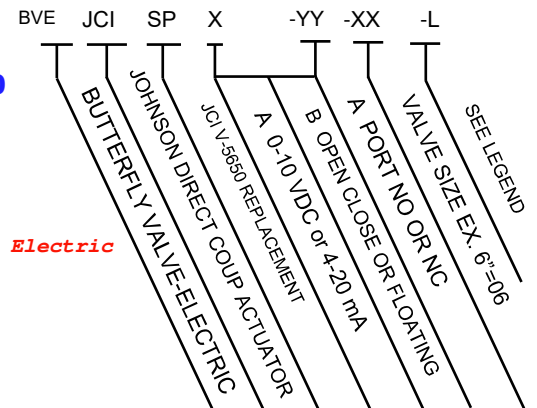
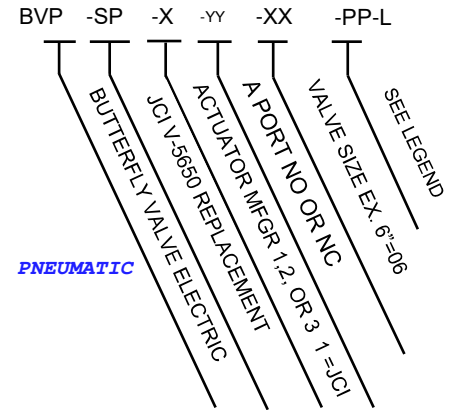
For Best Modulating Control Results Valves Are Adjusted For 70 Deg Max Opening

OBSOLETE JCI V-5650, V-210, V-330, & V5820 DIMENSIONS

SIZE IN.	MAX A DIM.	MAX B DIM.	*C DIM.	D DIM.	*E DIM.
2.5	16 1/2	32 13/16	9 1/4	7 1/2	4
3	16 1/2	33 7/16	10 3/8	8 1/8	4 3/8
4	16 1/2	34 11/16	12 1/8	9 3/4	5 1/4
5	16 1/2	36 9/16	13 1/2	11 3/8	6 3/16
6	16 1/2	38 5/16	15	13 1/8	7 1/4

WESLEY VALVE CO.

MFGRS OF AUTOMATED BUTTERFLY VALVES
3229 North L Street
Pensacola, FL 32505
PHN: (404) 351-8744 FAX: (404) 351-9340
www.wesleyvalve.com



LEGEND

- PP = Positive Positioner
- BS = Bump Switch
- WP = NEMA 4 Actuator
- B = Bray P = Pratt

Part Numbering System

Obsolete JCI V-5650 Valve