

# CHILLER HEAD PRESS CONTROL



WESLEY VALE CO.



## AUTOMATED BUTTERFLY VALVES WITH HIGH RESOLUTION FAST ACTING PNEUMATIC ACTUATORS



### Chiller Head Press Control

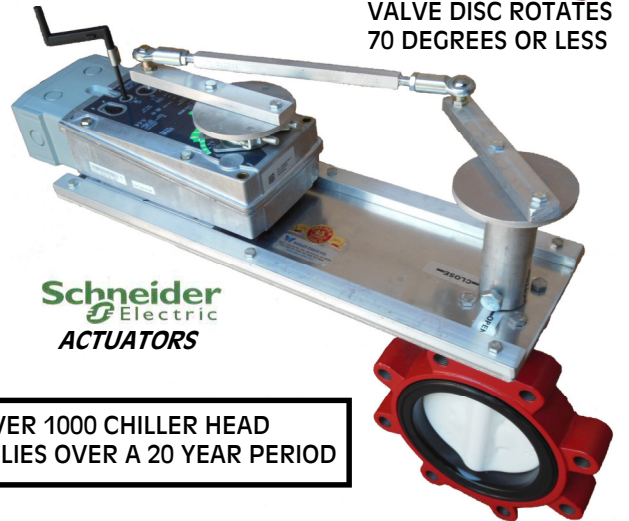
## AUTOMATED BUTTERFLY VALVES WITH HIGH RESOLUTION FAST ACTING ELECTRIC ACTUATORS



**BELIMO ACTUATORS**

ACTUATOR ROTATES 90 DEGREES

VALVE DISC ROTATES 70 DEGREES OR LESS

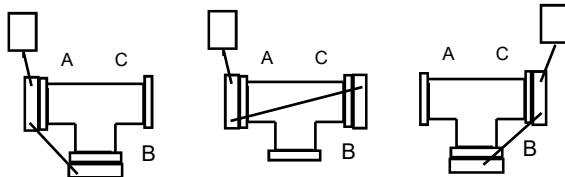
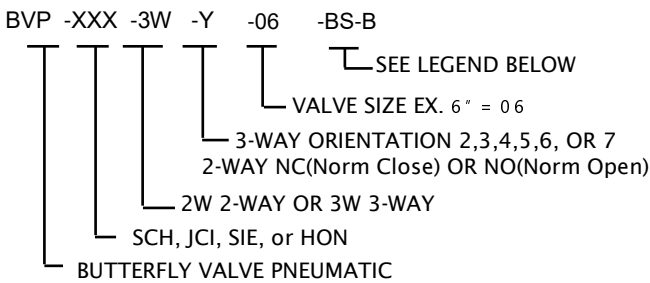


**Schneider Electric ACTUATORS**

## TIGHT OR PRECISE CONTROL REQUIRES NUMEROUS MODULATING VALVE DISC

WE HAVE PROVIDED OVER 1000 CHILLER HEAD PRESSURE VALVE ASSEMBLIES OVER A 20 YEAR PERIOD

### Pneumatic Valve Assembly Part

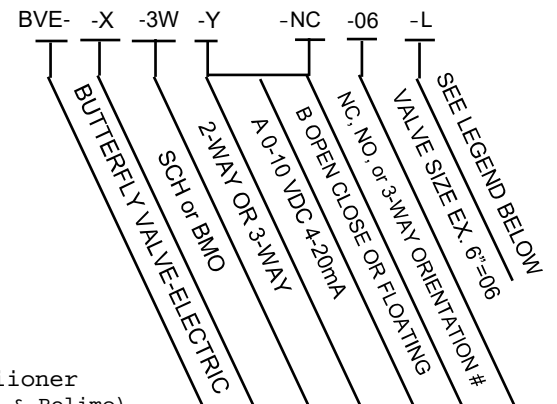


- 2: A CLOSED  
B OPEN
- 3: A OPEN  
B CLOSED
- 4: A CLOSED  
C OPEN
- 5: A OPEN  
C CLOSED
- 6: C CLOSED  
B OPEN
- 7: C OPEN  
B CLOSED

### 3-WAY VALVE ORIENTATIONS

Orientation is based on the position of valve ports with zero air pressure or 0 VDC/ mA on actuator.

### Electric Direct Coupled Actuator Valve Assembly Part Number



#### LEGEND

- PP = Positive Positioner
- WP = NEMA 4 (Schneider & Belimo)
- VBI = Visual Beacon Indicator
- AUX = Actuator Auxiliary Switch
- RF = Retrofit Kit
- B = Bray, P = Pratt

3-Way Valve Assemblies can be used when the Design Pump Curve is not suitable for High Pump Head Pressure