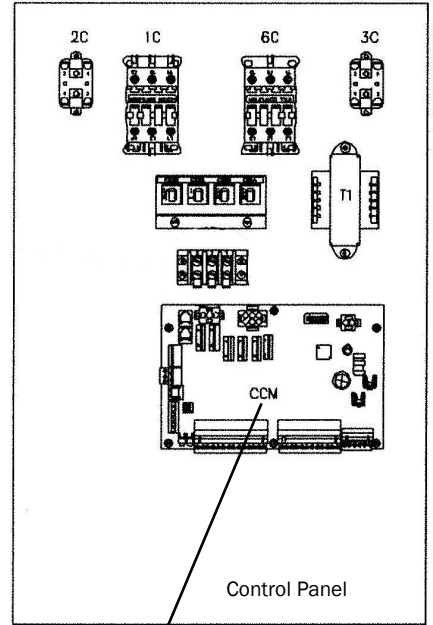
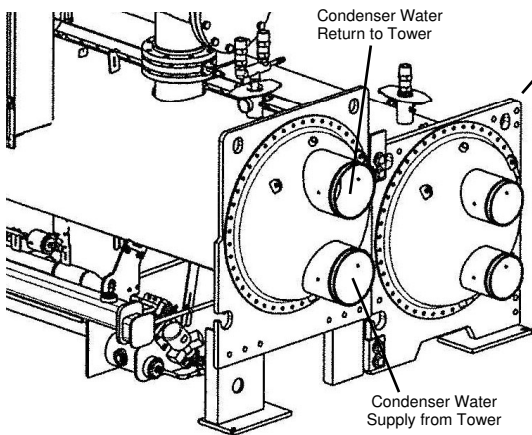


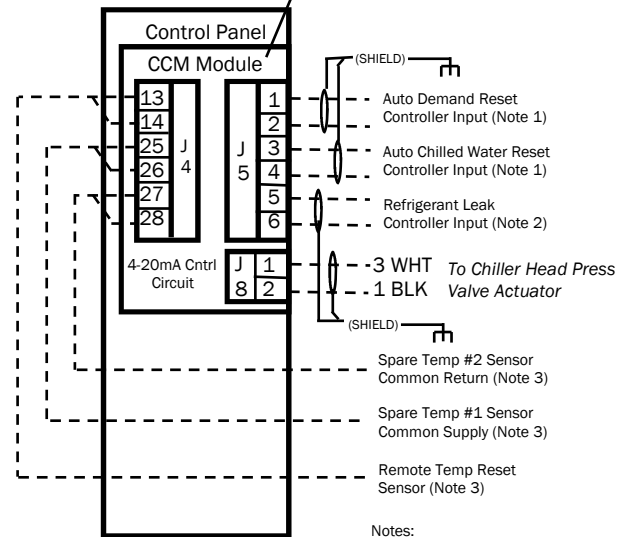
# CARRIER 23 XRV SCREW CHILLER HEAD PRESSURE VALVE CONTROL WIRING



Locate Chiller Head Press Valve in Condenser Water Return Line

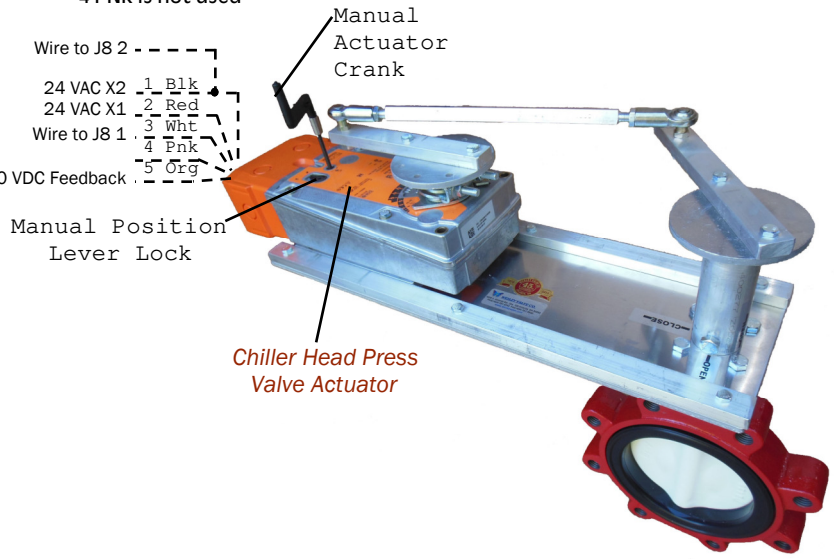
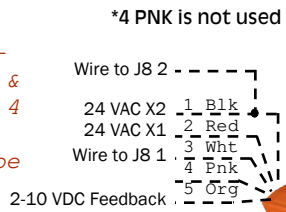


**CARRIER 19XR CENTRIFUGAL CHILLER CCM MODULE AND HEAD PRESSURE VALVE CONTROL WIRING IS IDENTICAL**



- Notes:
1. Requires a controller with a non grounded 4-20 mA or 1-5 Vdc signal. Not by Carrier
  2. Requires a controller with a non grounded 4-20 mA or 1-5 Vdc signal Not by Carrier
  3. Requires a sensor package option by Carrier

Add 500 Ohm Resistor between 1 Blk & 3 Wht for Chiller 4-20 mA Signal or the Resistor may be located at the Chiller Terminal Strip



ACTUATOR HAS 4 TO 1 LEVER

90 DEG ACTUATOR TO 60 DEG VALVE ROTATION OR A 1.5 TO 1 RATIO INCREASES THROTTLING DISC REPOSITIONS

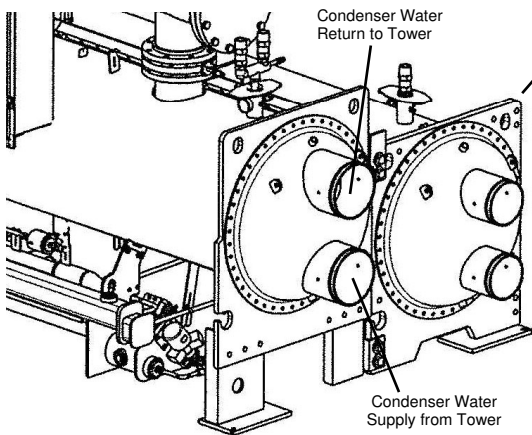
 **WESLEY VALVE CO.**  
MFGRS OF AUTOMATED BUTTERFLY VALVES  
3229 North L Street  
Pensacola, FL 32505  
PHN: (404) 351-8744 FAX: (404) 351-9340  
[www.wesleyvalve.com](http://www.wesleyvalve.com)

**CONDENSOR WATER VALVE**

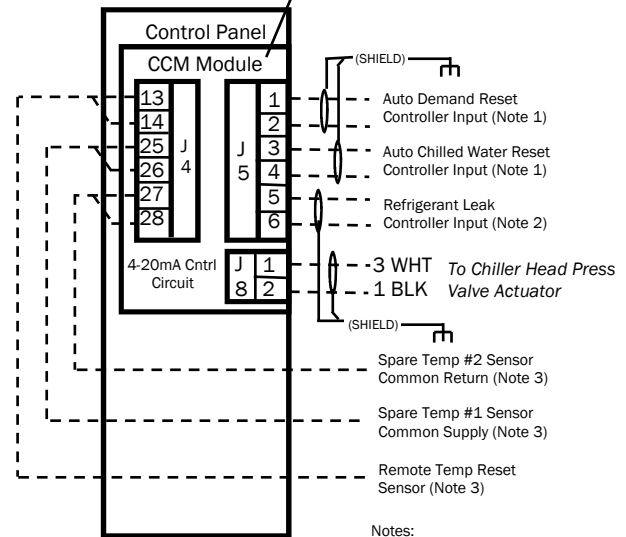
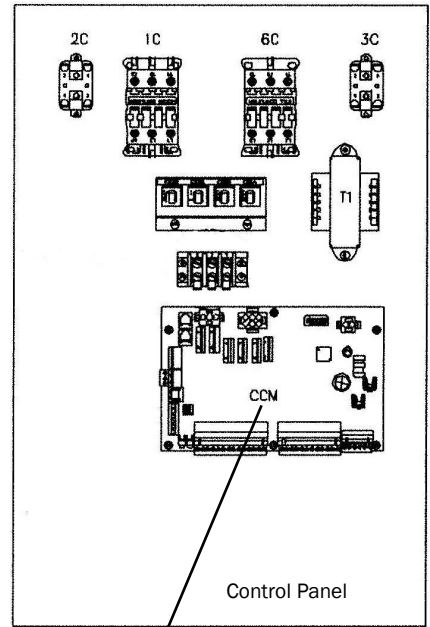
# CARRIER 23 XRV SCREW CHILLER HEAD PRESSURE VALVE CONTROL WIRING



Locate Chiller Head Press Valve  
in Condenser Water Return Line

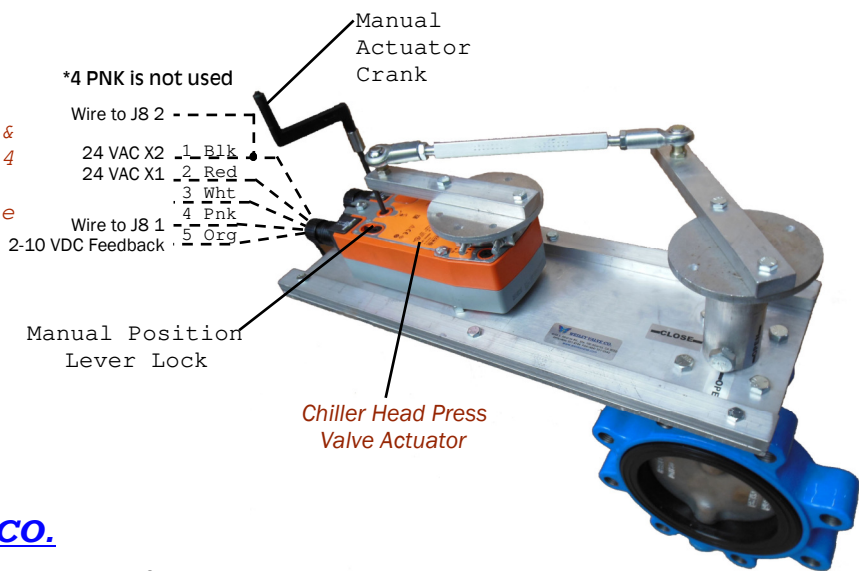


CARRIER 19XR CENTRIFUGAL  
CHILLER CCM MODULE AND  
HEAD PRESSURE VALVE  
CONTROL WIRING IS IDENTICAL



- Notes:
1. Requires a controller with a non grounded 4-20 mA or 1-5 Vdc signal. Not by Carrier
  2. Requires a controller with a non grounded 4-20 mA or 1-5 Vdc signal Not by Carrier
  3. Requires a sensor package option by Carrier

Add 500 Ohm Resistor between 1 Blk & 3 Wht for Chiller 4 -20 mA Signal or the Resistor may be located at the Chiller Terminal Strip



ACTUATOR HAS 4 TO 1 LEVER

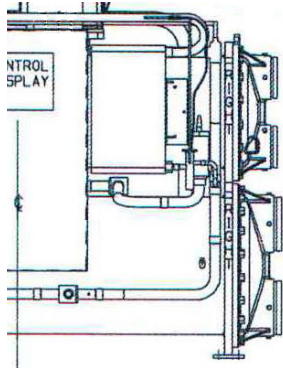
90 DEG ACTUATOR TO 60 DEG VALVE ROTATION OR A 1.5 TO 1 RATIO INCREASES THROTTLING DISC REPOSITIONS

 **WESLEY VALVE CO.**  
 MFGRS OF AUTOMATED BUTTERFLY VALVES  
 3229 North L Street  
 Pensacola, FL 32505  
 PHN: (404) 351-8744 FAX: (404) 351-9340  
[www.wesleyvalve.com](http://www.wesleyvalve.com)

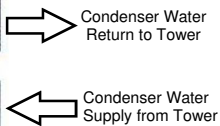
## CONDENSOR WATER VALVE



# CARRIER 30 HXC SCREW CHILLER UNITS HEAD PRESSURE VALVE CONTROL WIRING

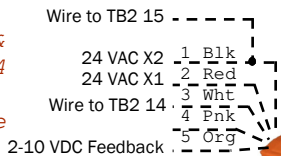


Locate Chiller Head Press Valve in Condenser Water Return Line

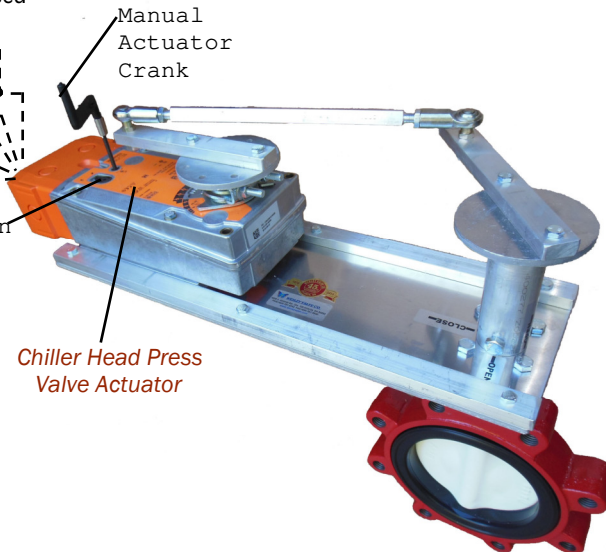


\*4 Pnk is not used

Add 500 Ohm Resistor between 1 Blk & 3 Wht for Chiller -20 mA Signal or the Resistor may be located at the Chiller Terminal Strip



Manual Position Lever Lock

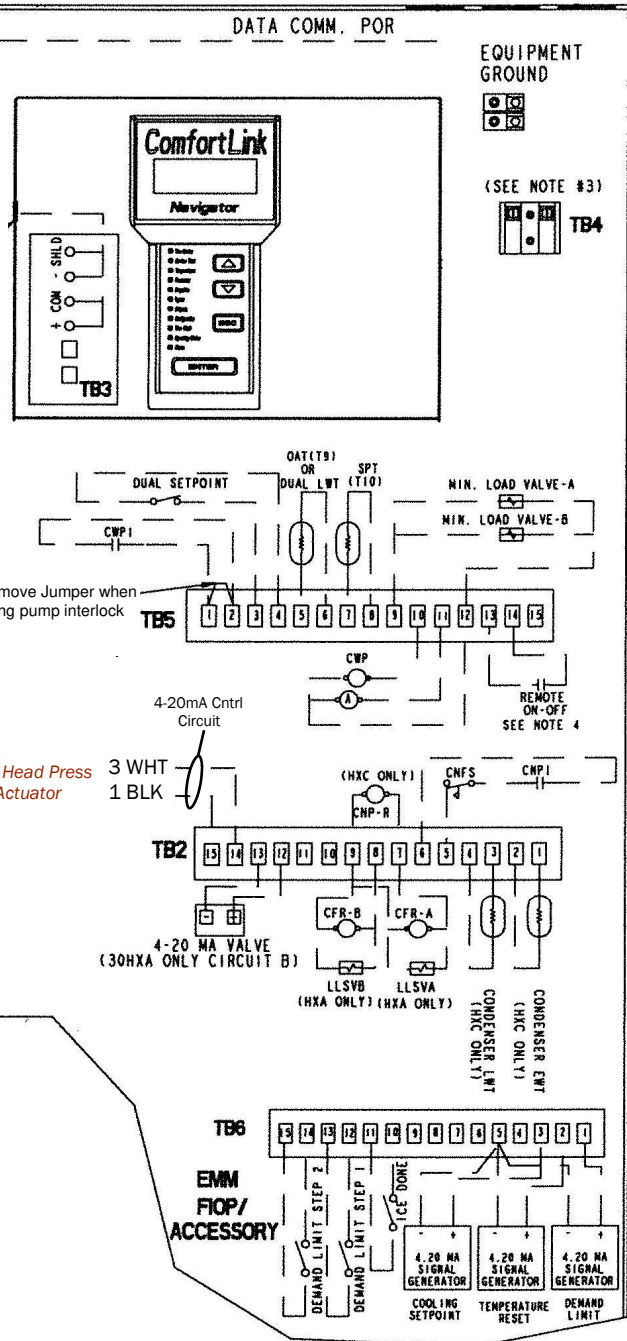


Chiller Head Press Valve Actuator

ACTUATOR HAS 4 TO 1 LEVER

90 DEG ACTUATOR TO 60 DEG VALVE ROTATION OR A 1.5 TO 1 RATIO INCREASES THROTTLING DISC REPOSITIONS

## CONDENSER WATER VALVE



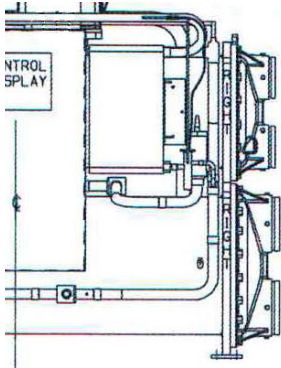
**WESLEY VALVE CO.**

MFGRS OF AUTOMATED BUTTERFLY VALVES  
3229 North L Street  
Pensacola, FL 32505

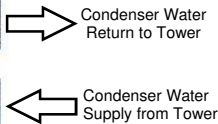
PHN: (404) 351-8744 FAX: (404) 351-9340

[www.wesleyvalve.com](http://www.wesleyvalve.com)

# CARRIER 30 HXC SCREW CHILLER UNITS HEAD PRESSURE VALVE CONTROL WIRING



Locate Chiller Head Press Valve in Condenser Water Return Line

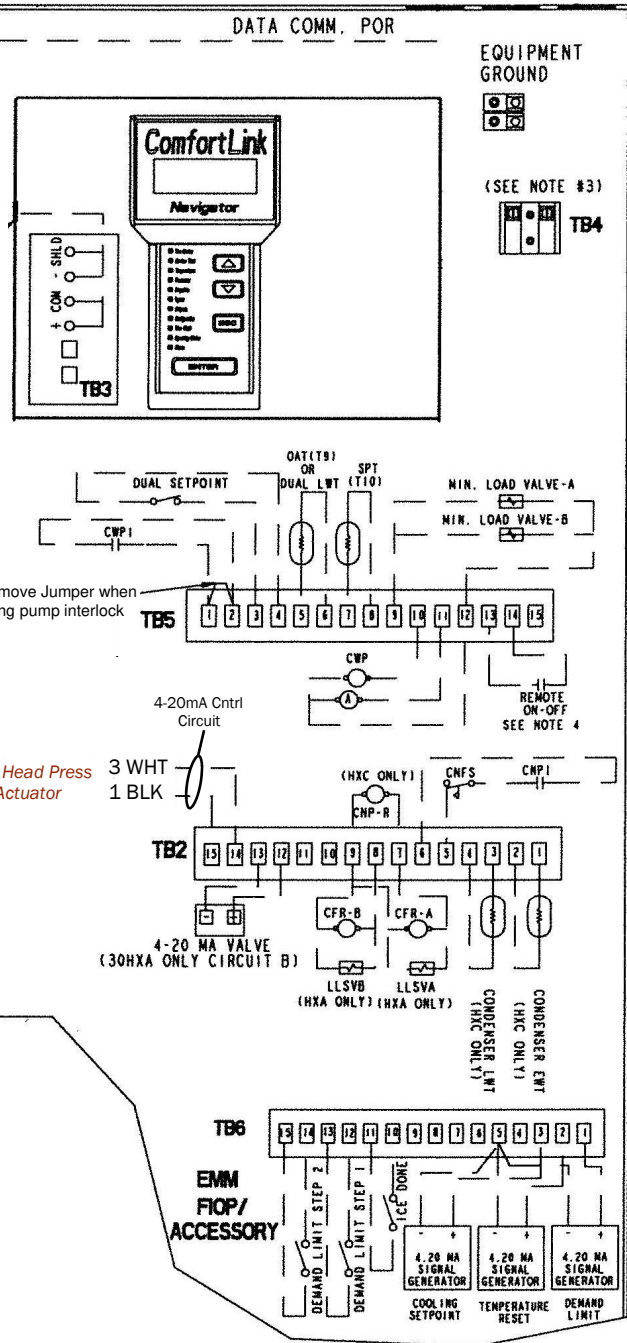
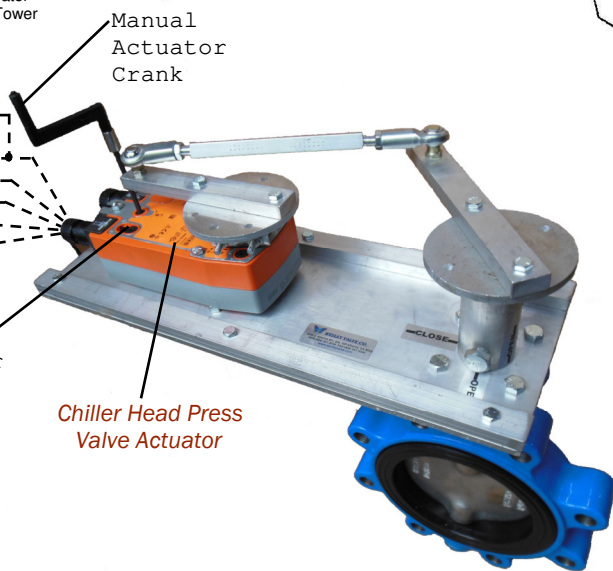


Add 500 Ohm Resistor between 1 Blk & 3 Wht for Chiller 4-20 mA Signal or the Resistor may be located at the Chiller Terminal Strip

- \*4 PNK is not used
- Wire to TB2 15 - 24 VAC X2 1 Blk
- 24 VAC X1 2 Red
- Wire to TB2 14 - 3 Wht
- 4 Pnk
- 2-10 VDC Feedback 5 Org

Manual Position Lever

Chiller Head Press Valve Actuator



ACTUATOR HAS 4 TO 1 LEVER

90 DEG ACTUATOR TO 60 DEG VALVE ROTATION OR A 1.5 TO 1 RATIO INCREASES THROTTLING DISC REPOSITIONS



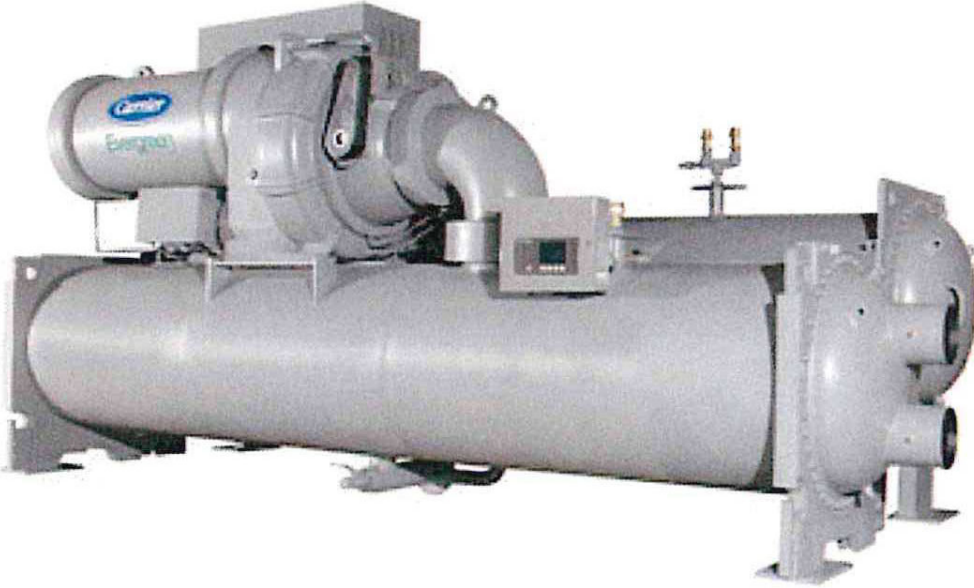
**WESLEY VALVE CO.**

MFGRS OF AUTOMATED BUTTERFLY VALVES  
 3229 North L Street  
 Pensacola, FL 32505  
 PHN: (404) 351-8744 FAX: (404) 351-9340  
[www.wesleyvalve.com](http://www.wesleyvalve.com)

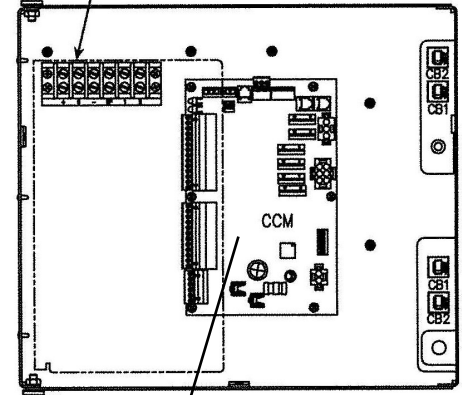
## CONDENSER WATER VALVE



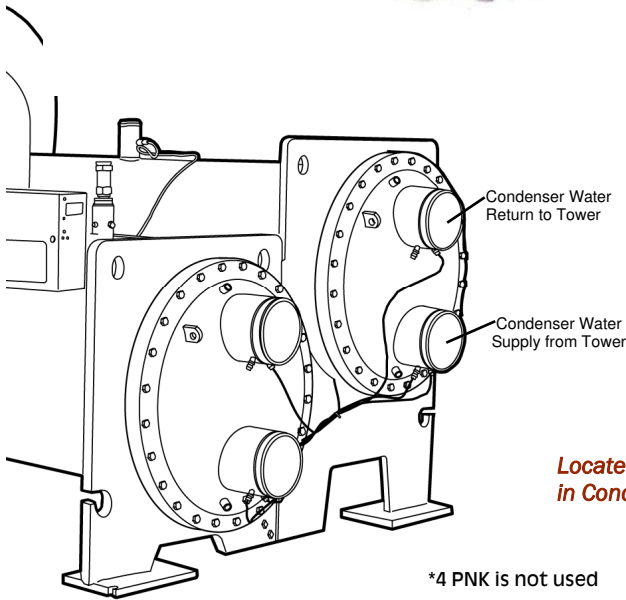
# CARRIER 19 XR CENTRIFUGAL CHILLER HEAD PRESSURE VALVE CONTROL WIRING



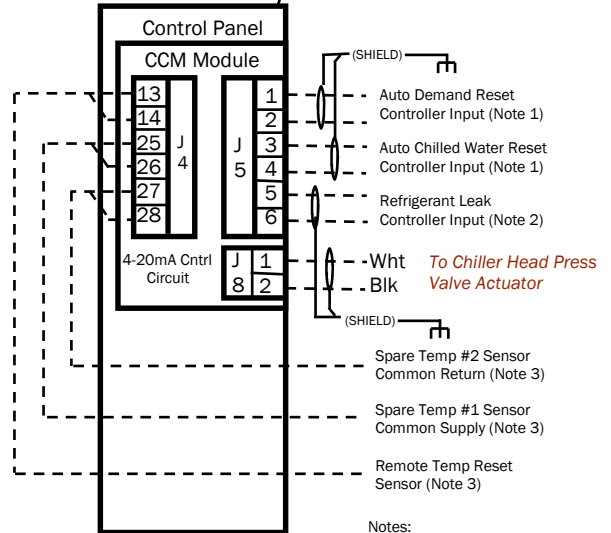
CARRIER COMFORT NETWORK (CCN) INTERFACE



Control Panel



**Locate Chiller Head Press Valve in Condenser Water Return Line**

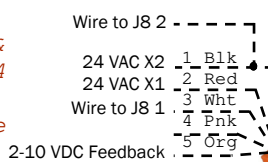


Notes:

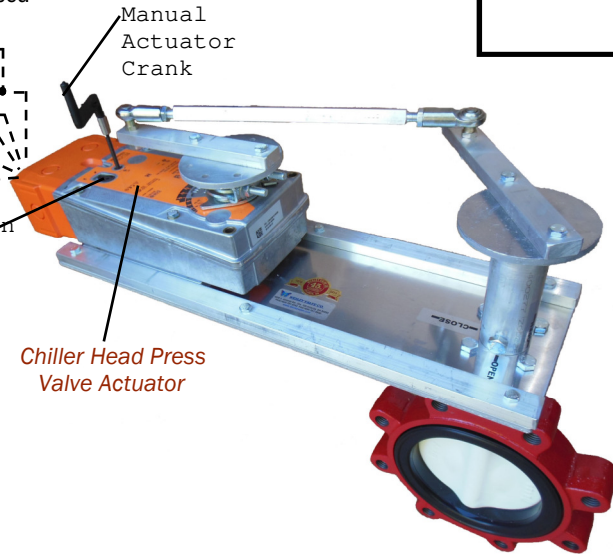
1. Requires a controller with a non grounded 4-20 mA or 1-5 Vdc signal. Not by Carrier
2. Requires a controller with a non grounded 4-20 mA or 1-5 Vdc signal Not by Carrier
3. Requires a sensor package option by Carrier

Add 500 Ohm Resistor between 1 Blk & 3 Wht for Chiller 4-20 mA Signal or the Resistor may be located at the Chiller Terminal Strip

\*4 PNK is not used



Manual Position Lever Lock



ACTUATOR HAS 4 TO 1 LEVER

90 DEG ACTUATOR TO 60 DEG VALVE ROTATION OR A 1.5 TO 1 RATIO INCREASES THROTTLING DISC REPOSITIONS

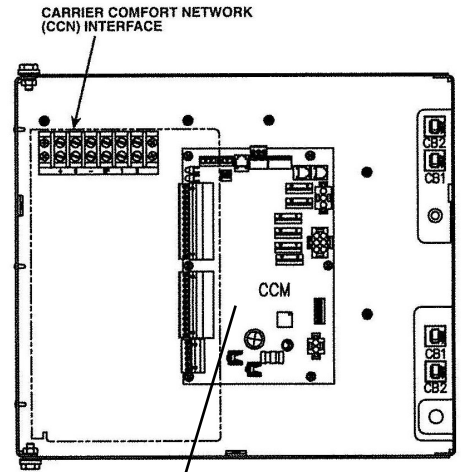
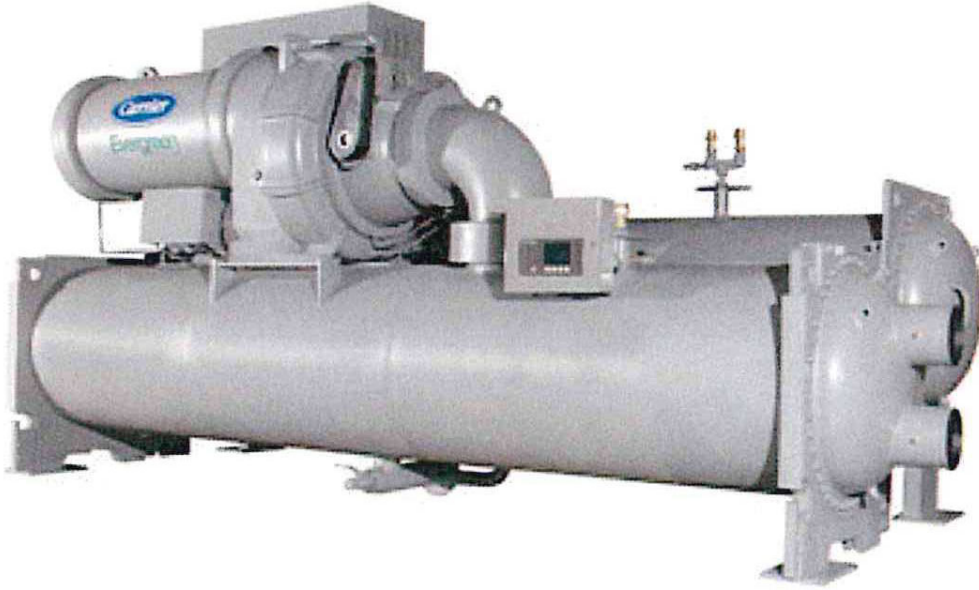
## CONDENSOR WATER VALVE



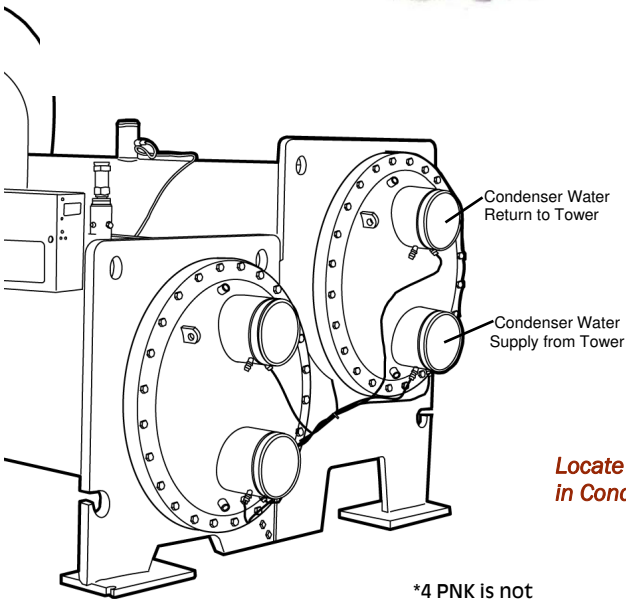
**WESLEY VALVE CO.**

MFGRS OF AUTOMATED BUTTERFLY VALVES  
3229 North L Street  
Pensacola, FL 32505  
PHN: (404) 351-8744 FAX: (404) 351-9340  
[www.wesleyvalve.com](http://www.wesleyvalve.com)

# CARRIER 19 XR CENTRIFUGAL CHILLER HEAD PRESSURE VALVE CONTROL WIRING



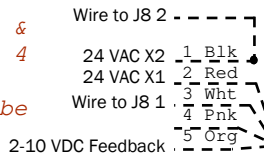
Control Panel



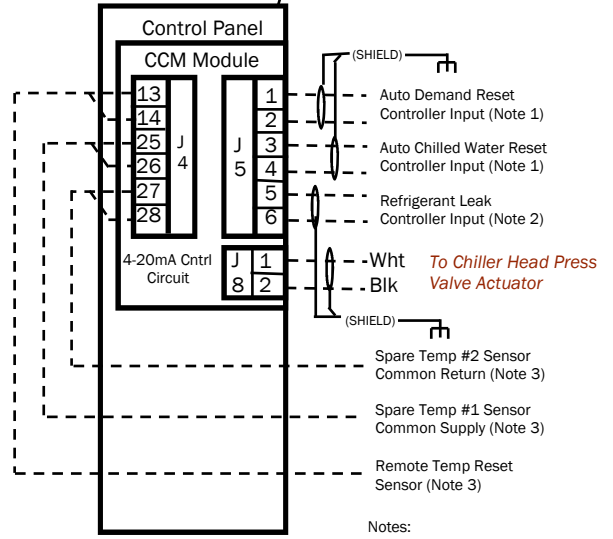
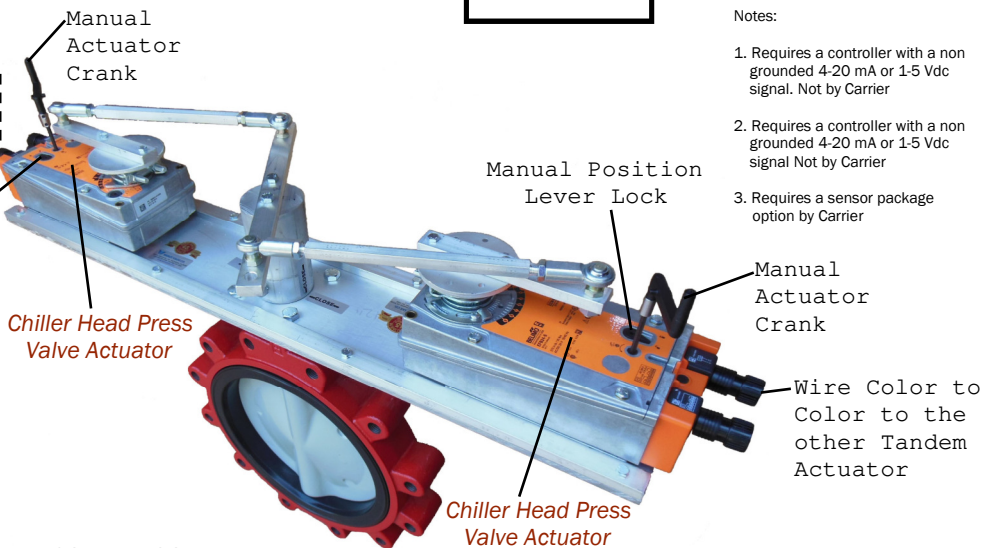
**Locate Chiller Head Press Valve in Condenser Water Return Line**

\*4 PNK is not

Add 500 Ohm Resistor between 1 Blk & 3 Wht for Chiller 4 -20 mA Signal or the Resistor may be located at the Chiller Terminal Strip



Manual Position Lever Lock



Notes:

1. Requires a controller with a non grounded 4-20 mA or 1-5 Vdc signal. Not by Carrier
2. Requires a controller with a non grounded 4-20 mA or 1-5 Vdc signal Not by Carrier
3. Requires a sensor package option by Carrier

## CONDENSATOR WATER VALVE

ACTUATOR HAS 4 TO 1 LEVER

90 DEG ACTUATOR TO 60 DEG VALVE ROTATION OR A 1.5 TO 1 RATIO INCREASES THROTTLING DISC REPOSITIONS



**WESLEY VALVE CO.**

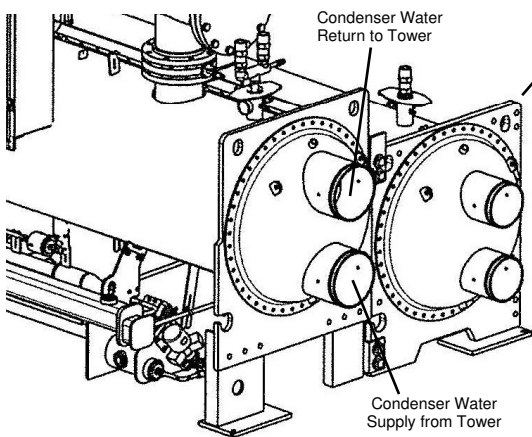
MFGRS OF AUTOMATED BUTTERFLY VALVES  
3229 North L Street  
Pensacola, FL 32505  
PHN: (404) 351-8744 FAX: (404) 351-9340  
[www.wesleyvalve.com](http://www.wesleyvalve.com)



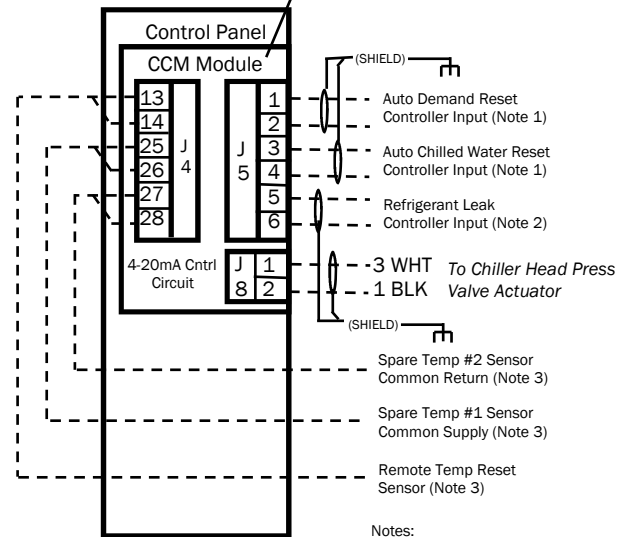
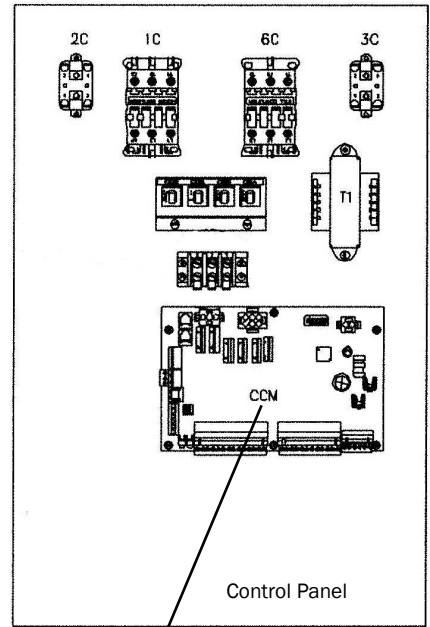
# CARRIER 23 XRV SCREW CHILLER HEAD PRESSURE 3-WAY VALVE CONTROL WIRING



Locate Chiller Head Press Valve  
in Condenser Water Return Line



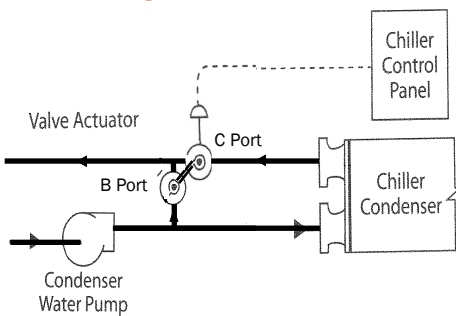
CARRIER 19XR CENTRIFUGAL  
CHILLER CCM MODULE AND  
HEAD PRESSURE VALVE  
CONTROL WIRING IS IDENTICAL



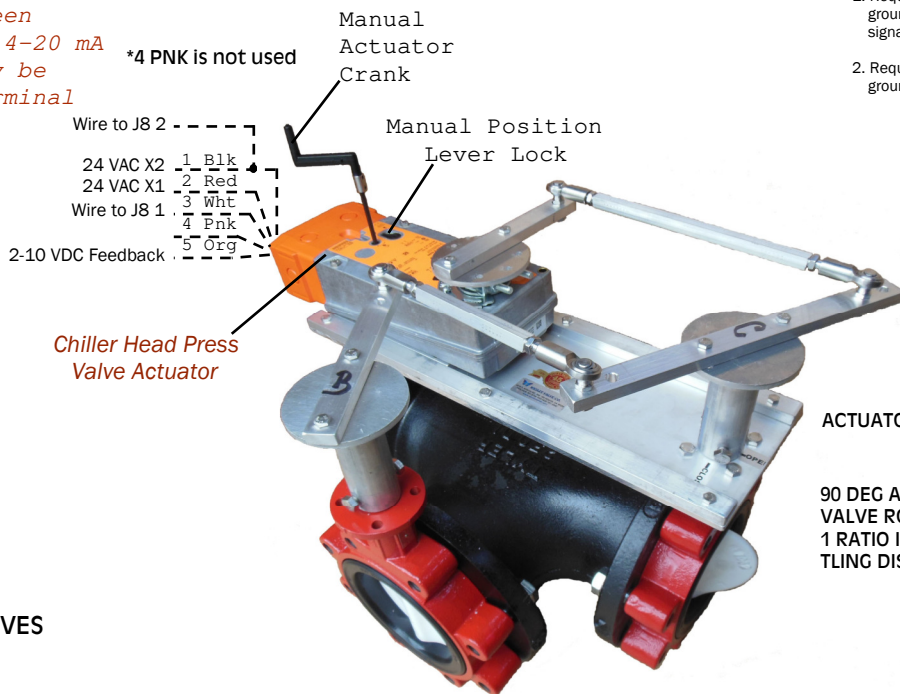
- Notes:
1. Requires a controller with a non grounded 4-20 mA or 1-5 Vdc signal. Not by Carrier
  2. Requires a controller with a non grounded 4-20 mA or 1-5 Vdc signal Not by Carrier
  3. Requires a sensor package option by

Add 500 Ohm Resistor between  
1 Blk & 3 Wht for Chiller 4-20 mA  
Signal or the Resistor may be  
located at the Chiller Terminal  
Strip

\*4 PNK is not used



CORRECT 3-WAY VALVE PIPING



Chiller Head Press  
Valve Actuator

ACTUATOR HAS 4 TO 1 LEVER

90 DEG ACTUATOR TO 60 DEG  
VALVE ROTATION OR A 1.5 TO  
1 RATIO INCREASES THROT-  
TLING DISC REPOSITIONS

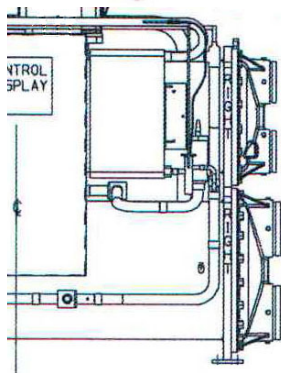
**CONDENSOR WATER VALVE**



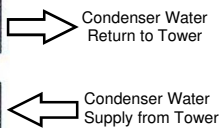
**WESLEY VALVE CO.**

MFGRS OF AUTOMATED BUTTERFLY VALVES  
3229 North L Street  
Pensacola, FL 32505  
PHN: (404) 351-8744 FAX: (404) 351-9340  
[www.wesleyvalve.com](http://www.wesleyvalve.com)

# CARRIER 30 HXC SCREW CHILLER UNITS HEAD PRESSURE 3-WAY VALVE CONTROL WIRING

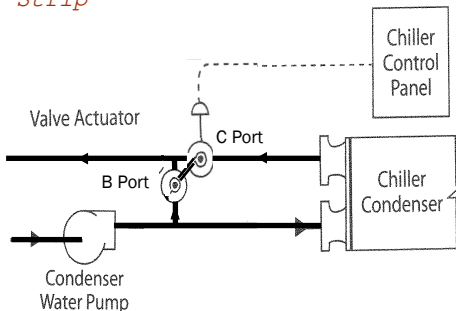


Locate Chiller Head Press Valve in Condenser Water Return Line



\*4 PNK is not used

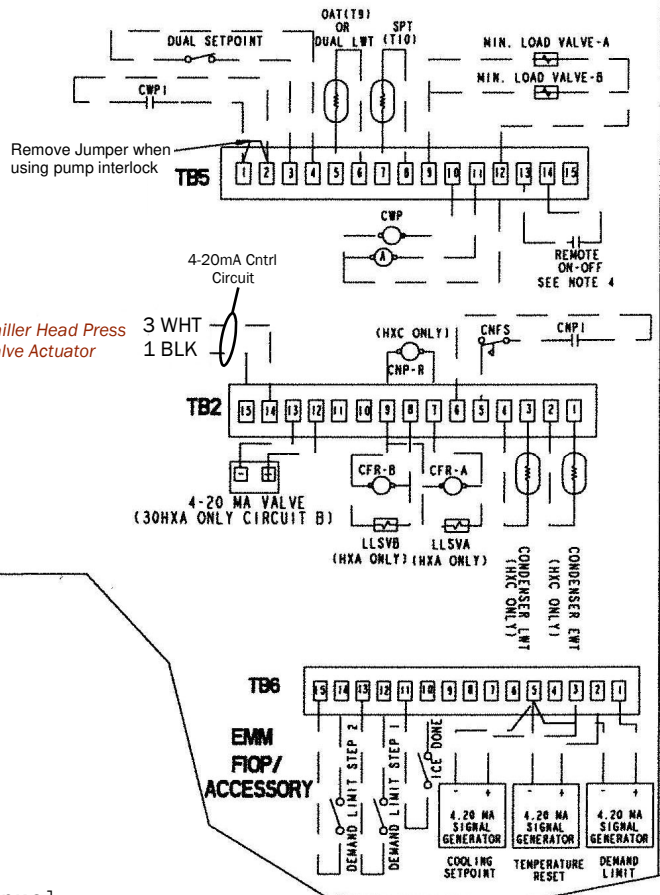
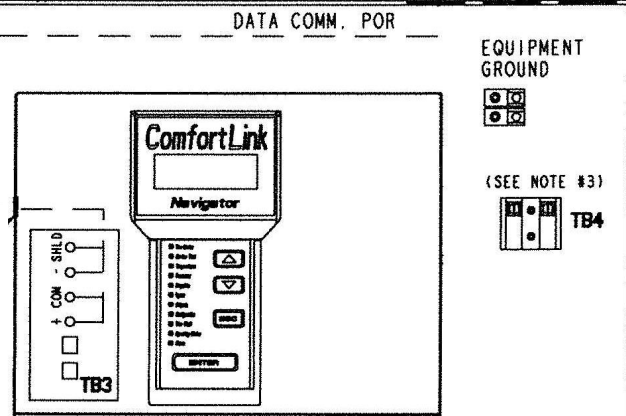
Add 500 Ohm Resistor between 1 Blk & 3 Wht for Chiller 4-20 mA Signal or the Resistor may be located at the Chiller Terminal Strip



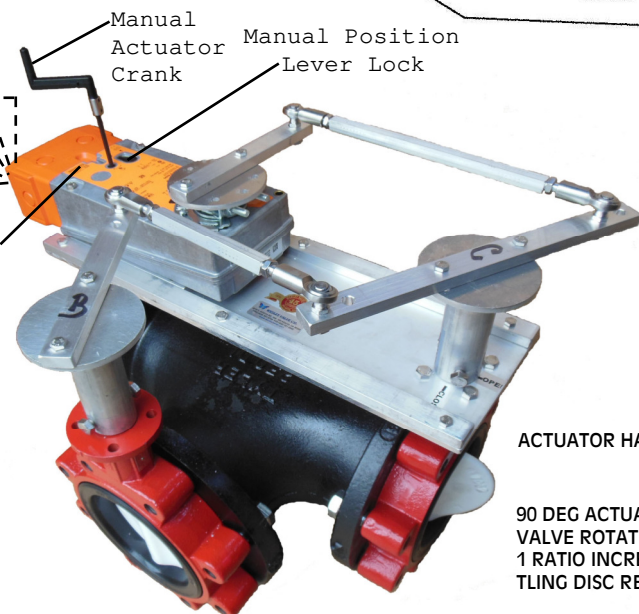
CORRECT 3-WAY VALVE PIPING

**WESLEY VALVE CO.**

MFGRS OF AUTOMATED BUTTERFLY VALVES  
3229 North L Street  
Pensacola, FL 32505  
PHN: (404) 351-8744 FAX: (404) 351-9340  
[www.wesleyvalve.com](http://www.wesleyvalve.com)



- Wire to TB2 15 - 1 Blk
- 24 VAC X2 - 2 Red
- 24 VAC X1 - 3 Wht
- Wire to TB2 14 - 4 Pnk
- 2-10 VDC Feedback - 5 Org



Chiller Head Press Valve Actuator

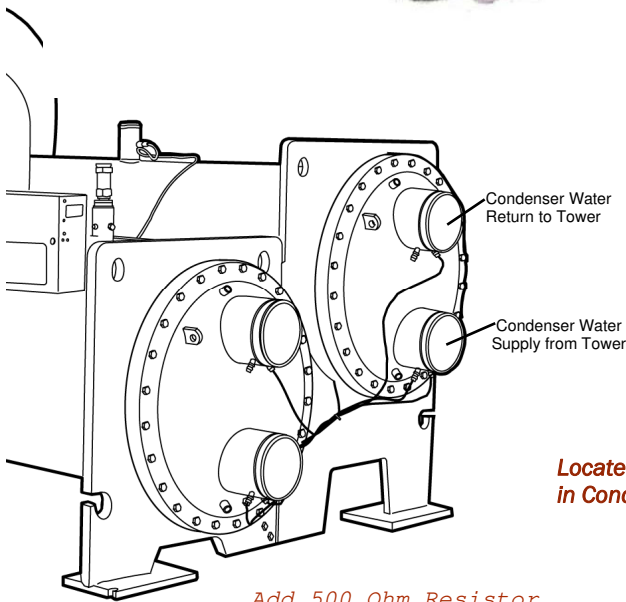
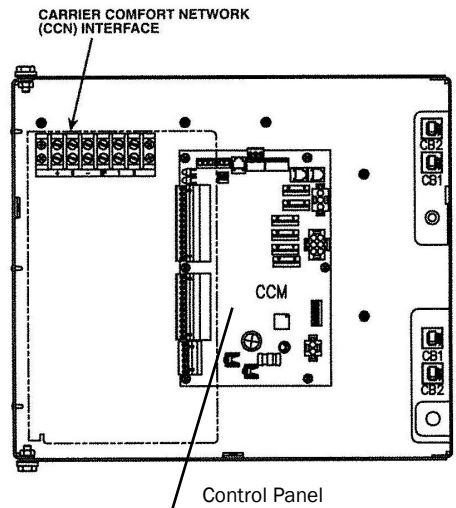
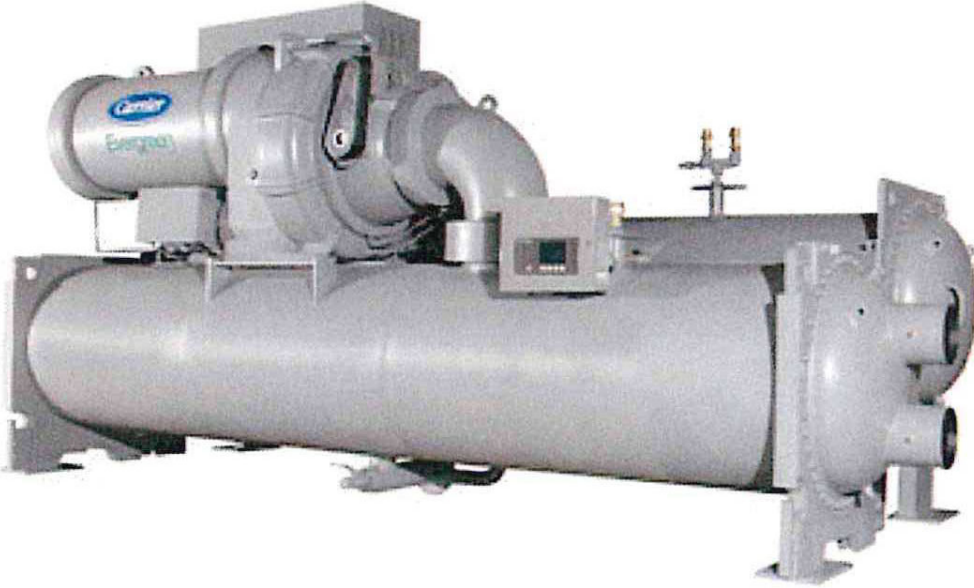
**CONDENSER WATER VALVE**

ACTUATOR HAS 4 TO 1 LEVER

90 DEG ACTUATOR TO 60 DEG VALVE ROTATION OR A 1.5 TO 1 RATIO INCREASES THROTTLING DISC REPOSITIONS

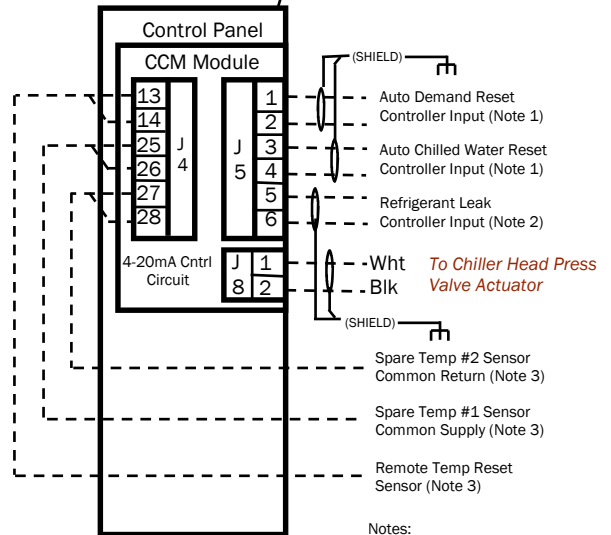


# CARRIER 19 XR CENTRIFUGAL CHILLER HEAD PRESSURE 3-WAY VALVE CONTROL WIRING



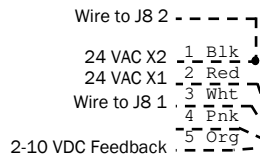
**Locate Chiller Head Press Valve in Condenser Water Return Line**

*Add 500 Ohm Resistor between 1 Blk & 3 Wht for Chiller 4-20 mA Signal or the Resistor may be located at the Chiller Terminal Strip*

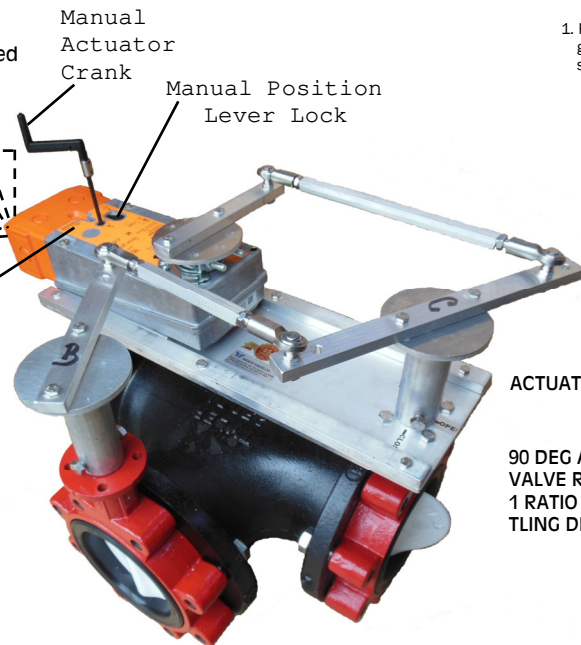


- Notes:
1. Requires a controller with a non grounded 4-20 mA or 1-5 Vdc signal. Not by Carrier
  2. Requires a controller with a non grounded 4-20 mA or 1-5 Vdc signal Not by Carrier
  3. Requires a sensor package

\*4 PNK is not used

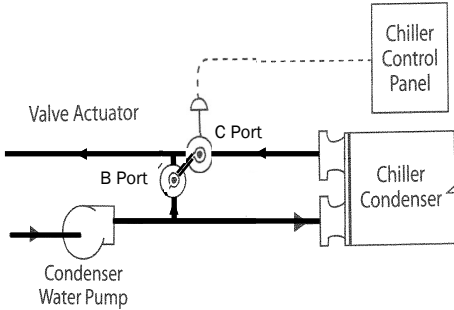


**Chiller Head Press Valve Actuator**



**ACTUATOR HAS 4 TO 1 LEVER**

**90 DEG ACTUATOR TO 60 DEG VALVE ROTATION OR A 1.5 TO 1 RATIO INCREASES THROTTLING DISC REPOSITIONS**



**CORRECT 3-WAY VALVE PIPING**

**CONDENSOR WATER VALVE**



**WESLEY VALVE CO.**

MFGRS OF AUTOMATED BUTTERFLY VALVES  
3229 North L Street  
Pensacola, FL 32505  
PHN: (404) 351-8744 FAX: (404) 351-9340  
[www.wesleyvalve.com](http://www.wesleyvalve.com)