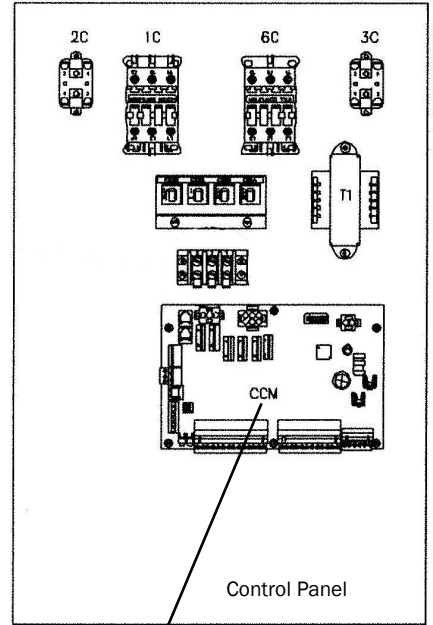
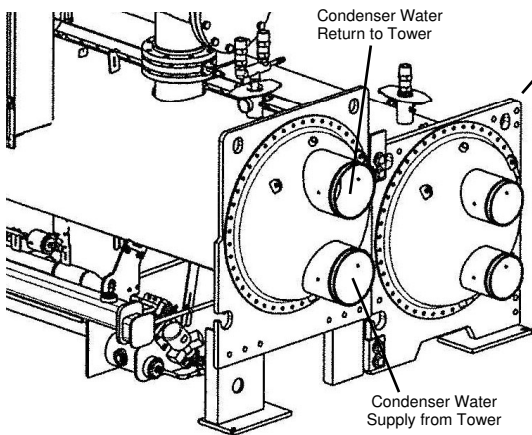


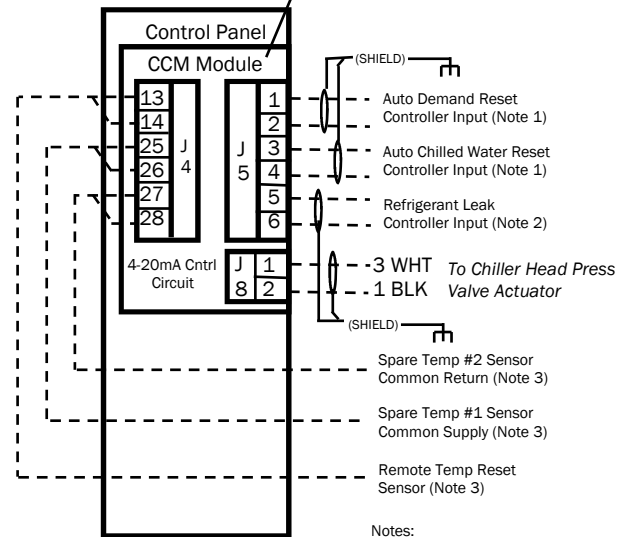
# CARRIER 23 XRV SCREW CHILLER HEAD PRESSURE VALVE CONTROL WIRING



Locate Chiller Head Press Valve  
in Condenser Water Return Line

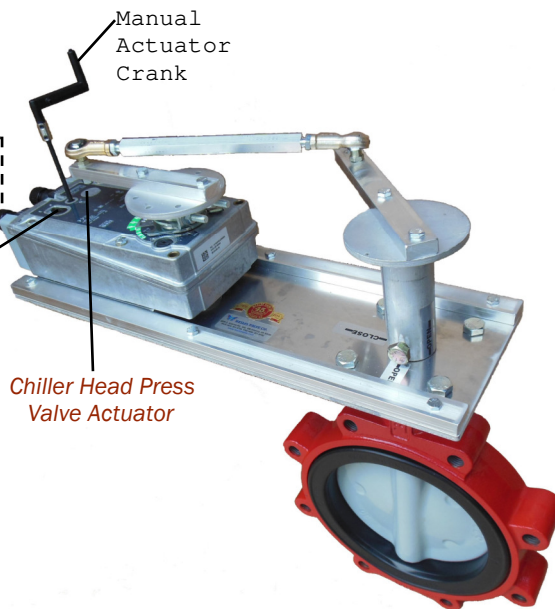
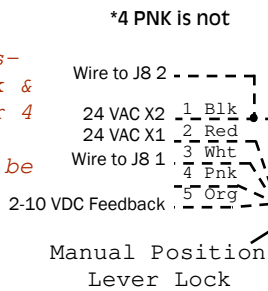


**CARRIER 19XR CENTRIFUGAL  
CHILLER CCM MODULE AND  
HEAD PRESSURE VALVE  
CONTROL WIRING IS IDENTICAL**



- Notes:
1. Requires a controller with a non grounded 4-20 mA or 1-5 Vdc signal. Not by Carrier
  2. Requires a controller with a non grounded 4-20 mA or 1-5 Vdc signal Not by Carrier
  3. Requires a sensor package option by Carrier

Add 500 Ohm Resistor between 1 Blk & 3 Wht for Chiller 4-20 mA Signal or the Resistor may be located at the Chiller Terminal Strip



ACTUATOR HAS 4 TO 1 LEVER

90 DEG ACTUATOR TO 60 DEG VALVE ROTATION OR A 1.5 TO 1 RATIO INCREASES THROTTLING DISC REPOSITIONS

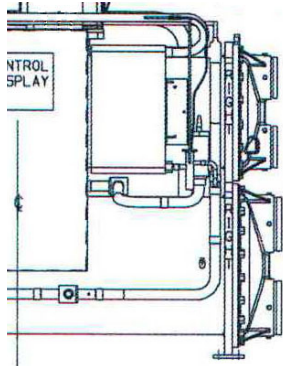


**WESLEY VALVE CO.**

MFGRS OF AUTOMATED BUTTERFLY VALVES  
3229 North L Street  
Pensacola, FL 32505  
PHN: (404) 351-8744 FAX: (404) 351-9340  
[www.wesleyvalve.com](http://www.wesleyvalve.com)

**CONDENSOR WATER VALVE**

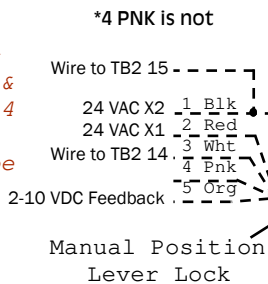
# CARRIER 30 HXC SCREW CHILLER UNITS HEAD PRESSURE VALVE CONTROL WIRING



Locate Chiller Head Press Valve in Condenser Water Return Line

Condenser Water Return to Tower  
Condenser Water Supply from Tower

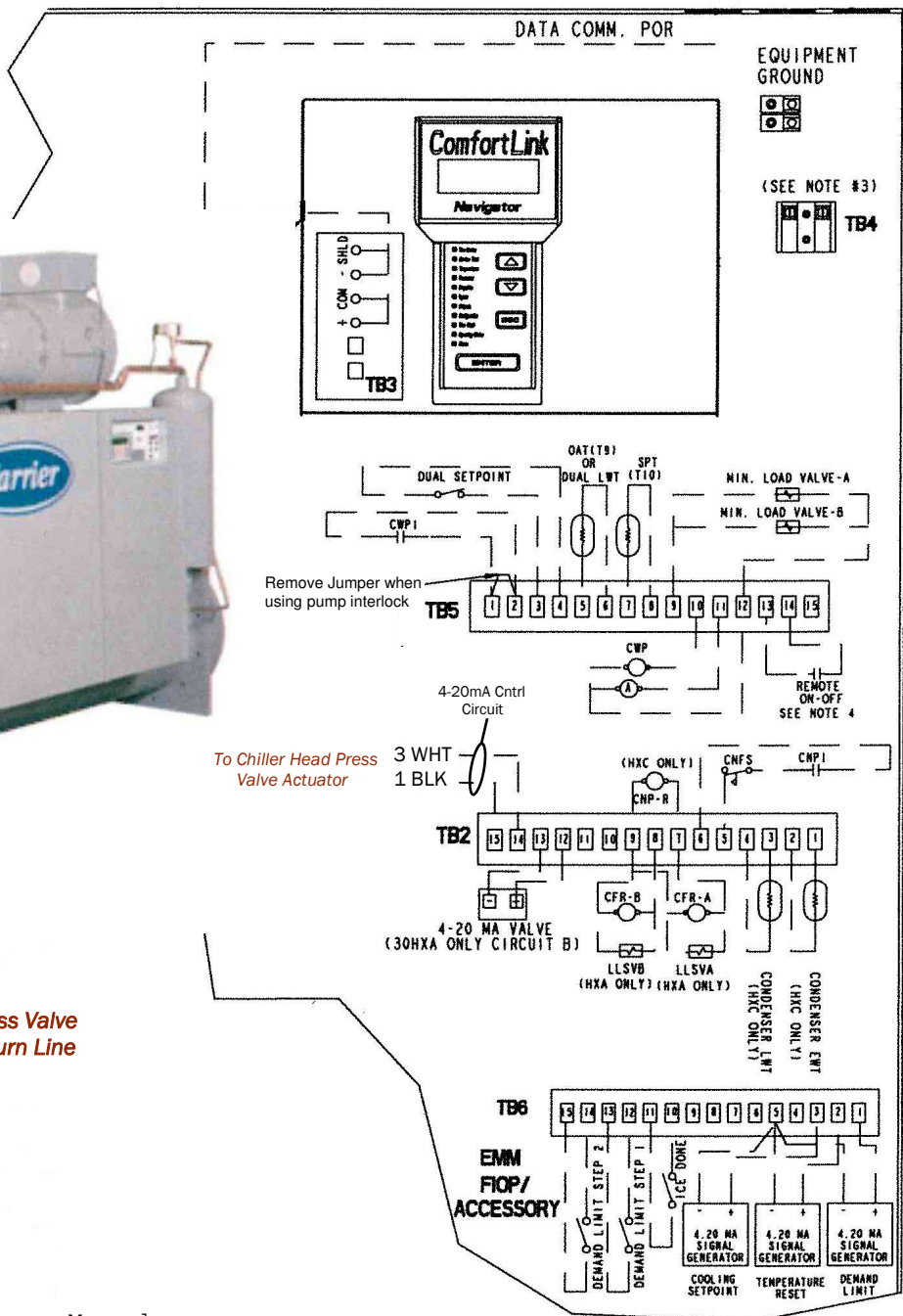
Add 500 Ohm Resistor between 1 Blk & 3 Wht for Chiller 4-20 mA Signal or the Resistor may be located at the Chiller Terminal Strip



Manual Actuator Crank  
Chiller Head Press Valve Actuator

ACTUATOR HAS 4 TO 1 LEVER

90 DEG ACTUATOR TO 60 DEG VALVE ROTATION OR A 1.5 TO 1 RATIO INCREASES THROTTLING DISC REPOSITIONS

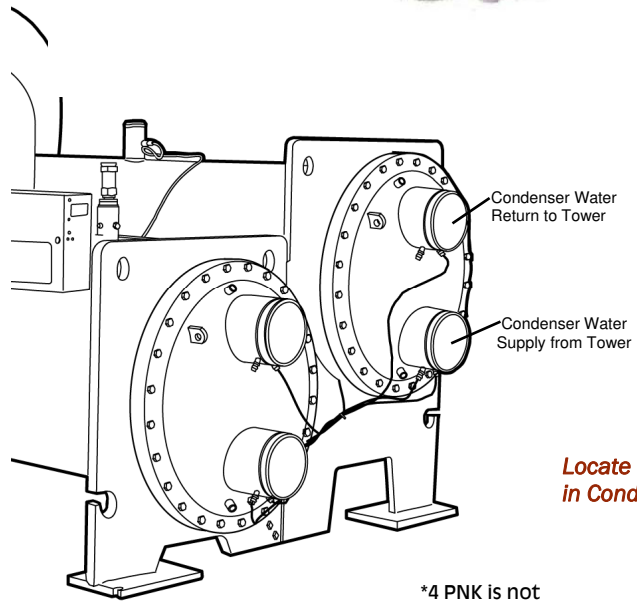
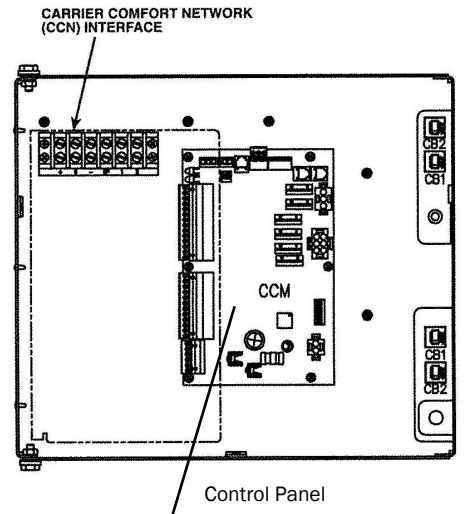
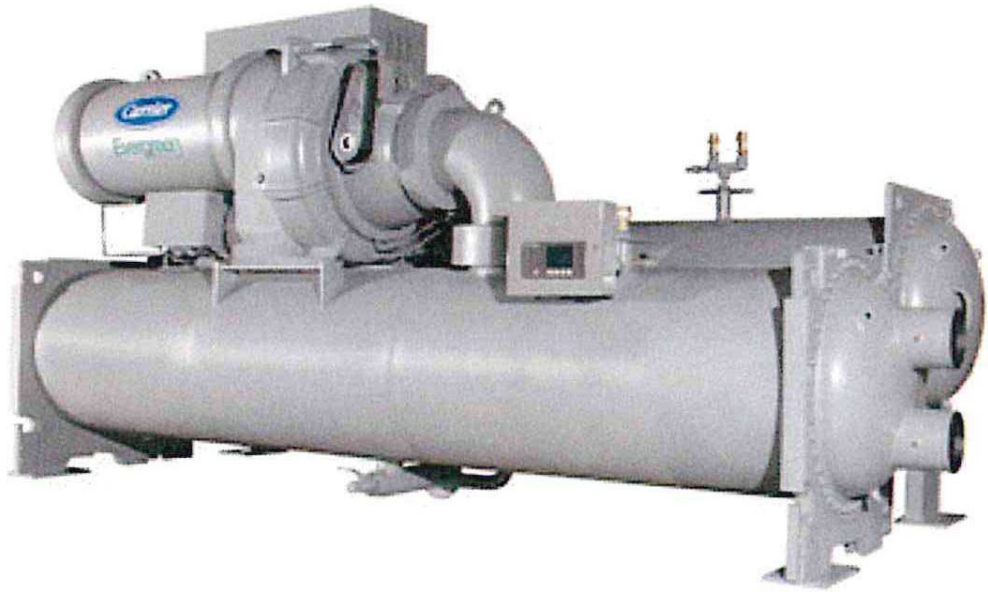


**WESLEY VALVE CO.**

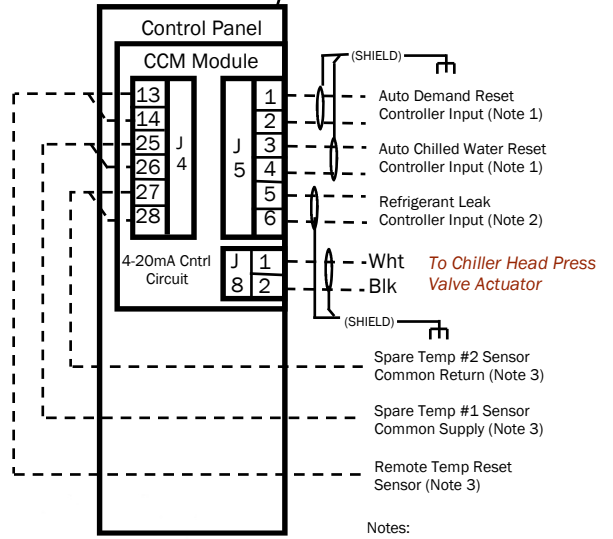
MFGRS OF AUTOMATED BUTTERFLY VALVES  
3229 North L Street  
Pensacola, FL 32505  
PHN: (404) 351-8744 FAX: (404) 351-9340  
[www.wesleyvalve.com](http://www.wesleyvalve.com)

**CONDENSOR WATER VALVE**

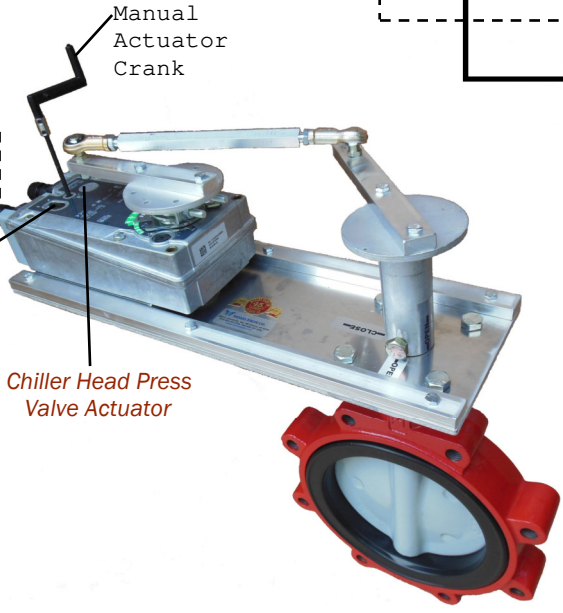
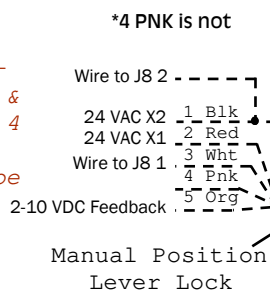
# CARRIER 19 XR CENTRIFUGAL CHILLER HEAD PRESSURE VALVE CONTROL WIRING



**Locate Chiller Head Press Valve in Condenser Water Return Line**



Add 500 Ohm Resistor between 1 Blk & 3 Wht for Chiller 4 -20 mA Signal or the Resistor may be located at the Chiller Terminal Strip



**ACTUATOR HAS 4 TO 1 LEVER**

**90 DEG ACTUATOR TO 60 DEG VALVE ROTATION OR A 1.5 TO 1 RATIO INCREASES THROTTLING DISC REPOSITIONS**

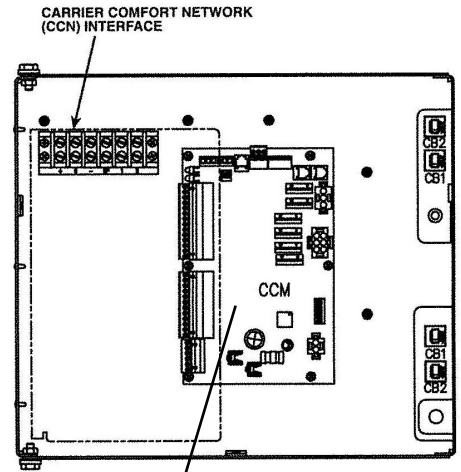
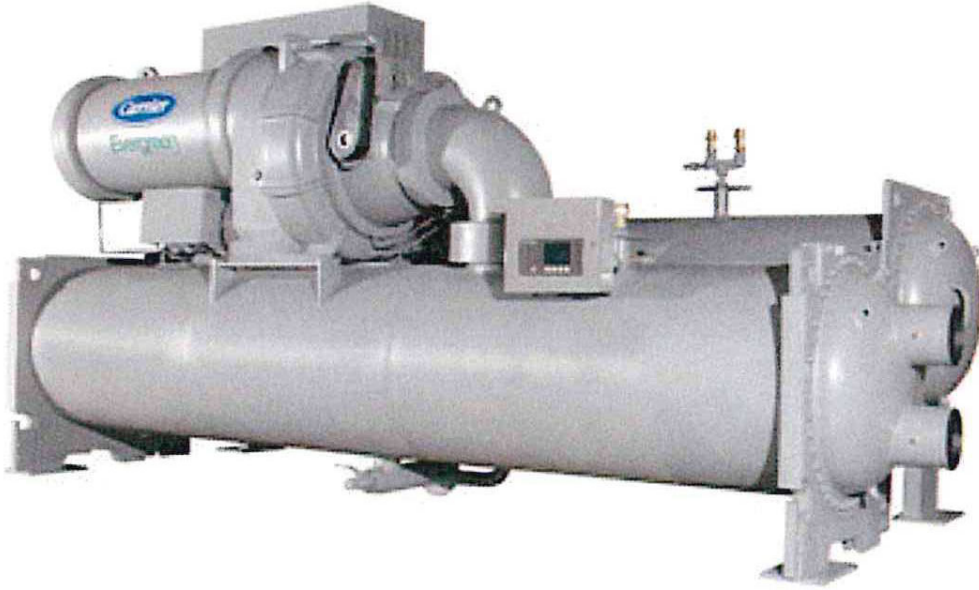


**WESLEY VALVE CO.**

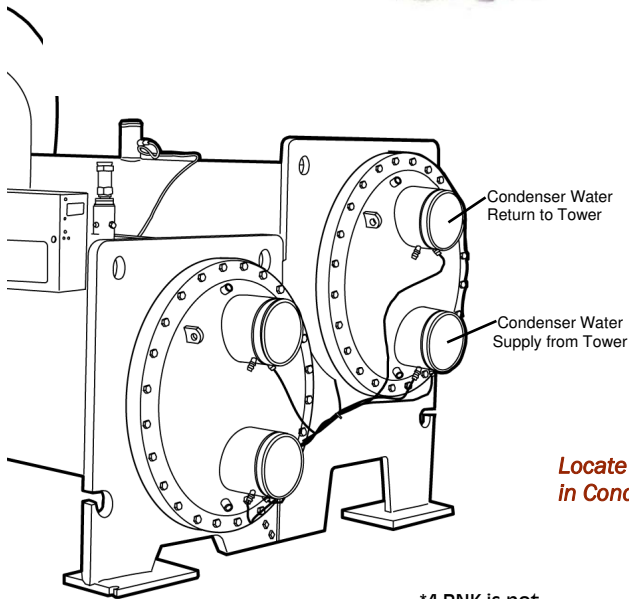
MFGRS OF AUTOMATED BUTTERFLY VALVES  
3229 North L Street  
Pensacola, FL 32505  
PHN: (404) 351-8744 FAX: (404) 351-9340  
[www.wesleyvalve.com](http://www.wesleyvalve.com)

**CONDENSOR WATER VALVE**

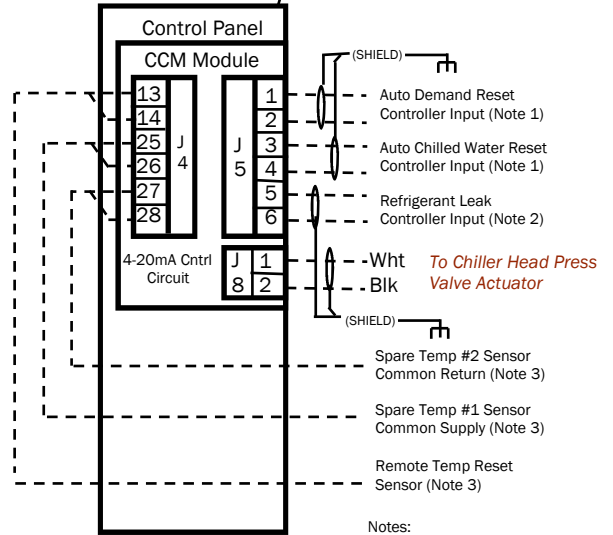
# CARRIER 19 XR CENTRIFUGAL CHILLER HEAD PRESSURE VALVE CONTROL WIRING



Control Panel

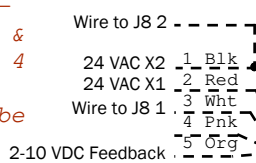


**Locate Chiller Head Press Valve in Condenser Water Return Line**



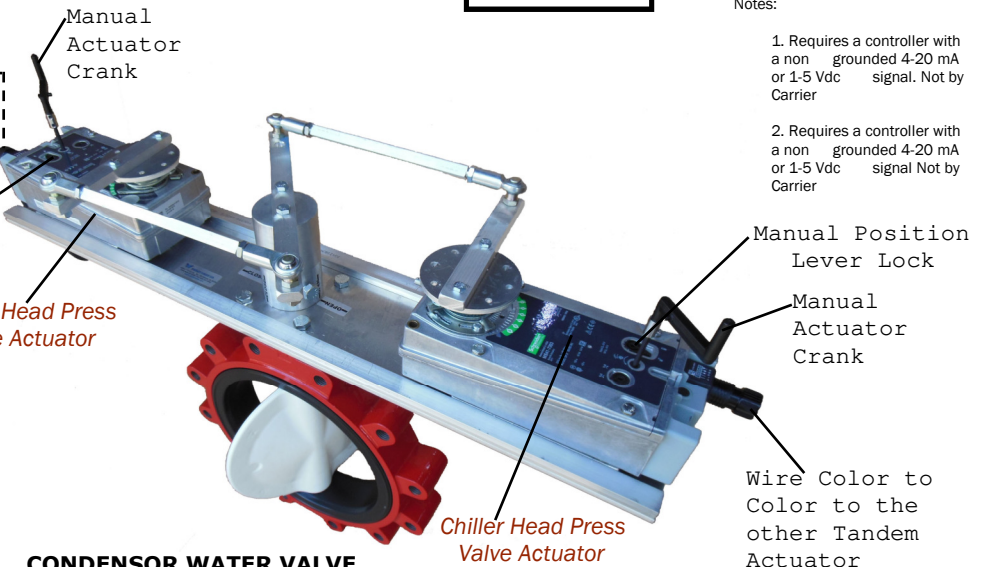
\*4 PNK is not

Add 500 Ohm Resistor between 1 Blk & 3 Wht for Chiller 4 -20 mA Signal or the Resistor may be located at the Chiller Terminal Strip



Manual Position Lever Lock

Chiller Head Press Valve Actuator



## CONDENSOR WATER VALVE

ACTUATOR HAS 4 TO 1 LEVER OR TORQUING ADVANTAGE

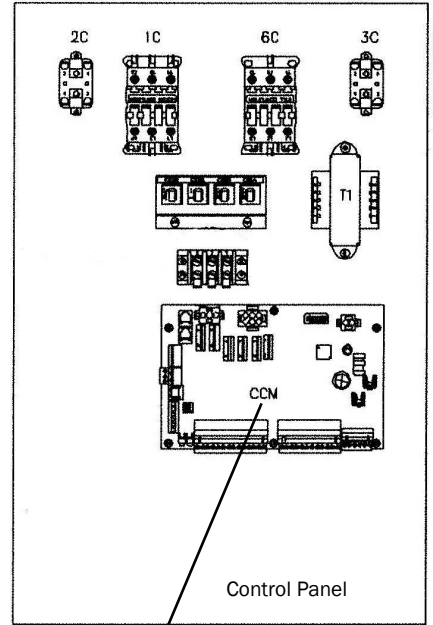
90 DEG ACTUATOR TO 60 DEG VALVE ROTATION OR A 1.5 TO 1 RATIO INCREASES THROTTLING



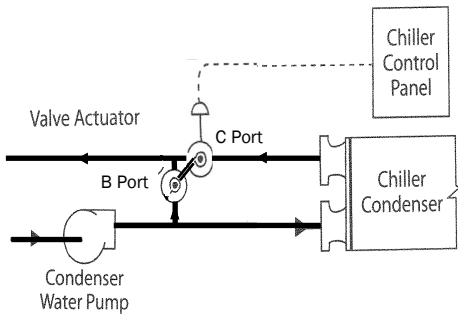
**WESLEY VALVE CO.**

MFGRS OF AUTOMATED BUTTERFLY VALVES  
3229 North L Street  
Pensacola, FL 32505  
PHN: (404) 351-8744 FAX: (404) 351-9340  
[www.wesleyvalve.com](http://www.wesleyvalve.com)

# CARRIER 23 XRV SCREW CHILLER HEAD PRESSURE VALVE CONTROL WIRING

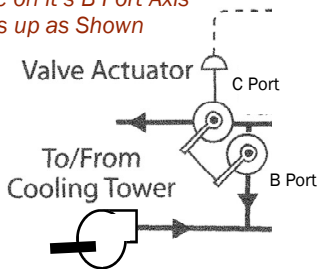


Control Panel



CORRECT 3-WAY VALVE PIPING

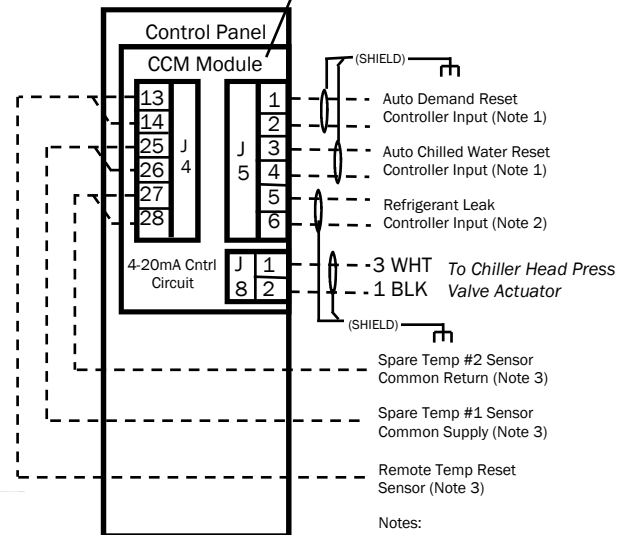
During Pipe Installation, DO NOT Spin the Valve on it's B Port Axis so that it ends up as Shown



INCORRECT 3-WAY VALVE PIPING

**CARRIER 19XR CENTRIFUGAL CHILLER CCM MODULE AND HEAD PRESSURE VALVE CONTROL WIRING IS IDENTICAL**

Add 500 Ohm Resistor between 1 Blk & 3 Wht for Chiller 4-20 mA Signal or the Resistor may be located at the Chiller Terminal Strip



Auto Demand Reset Controller Input (Note 1)

Auto Chilled Water Reset Controller Input (Note 1)

Refrigerant Leak Controller Input (Note 2)

-3 WHT To Chiller Head Press Valve Actuator

-1 BLK Spare Temp #2 Sensor Common Return (Note 3)

Spare Temp #1 Sensor Common Supply (Note 3)

Remote Temp Reset Sensor (Note 3)

Notes:

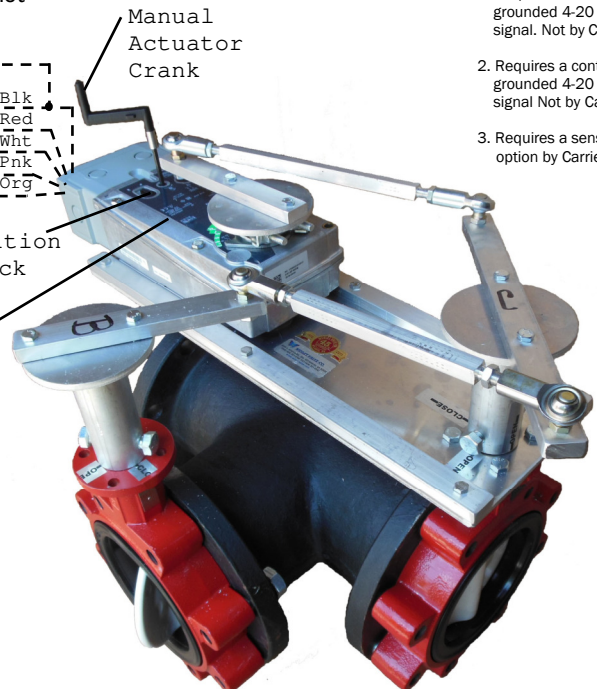
1. Requires a controller with a non grounded 4-20 mA or 1-5 Vdc signal. Not by Carrier
2. Requires a controller with a non grounded 4-20 mA or 1-5 Vdc signal Not by Carrier
3. Requires a sensor package option by Carrier

\*4 PNK is not used

- Wire to J8 2: 1 Blk, 2 Red, 3 Wht, 4 Pnk, 5 Org
- 24 VAC X2: 1 Blk, 2 Red
- 24 VAC X1: 3 Wht, 4 Pnk, 5 Org
- Wire to J8 1: 1 Blk, 2 Red, 3 Wht, 4 Pnk, 5 Org
- 2-10 VDC Feedback: 1 Blk, 2 Red, 3 Wht, 4 Pnk, 5 Org

Manual Position Lever Lock

Chiller Head Press Valve Actuator Set 2-10 VDC



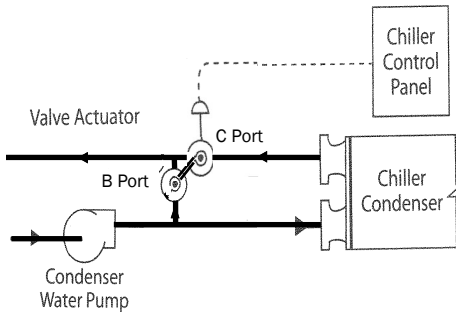
**CONDENSOR WATER VALVE**



**WESLEY VALVE CO.**

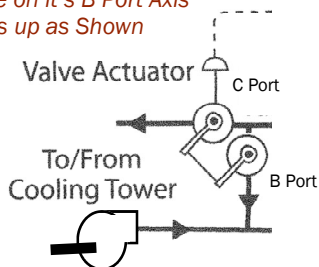
MFGRS OF AUTOMATED BUTTERFLY VALVES  
3229 North L Street  
Pensacola, FL 32505  
PHN: (404) 351-8744 FAX: (404) 351-9340  
[www.wesleyvalve.com](http://www.wesleyvalve.com)

# CARRIER 30 HXC SCREW CHILLER UNITS HEAD PRESSURE VALVE CONTROL WIRING

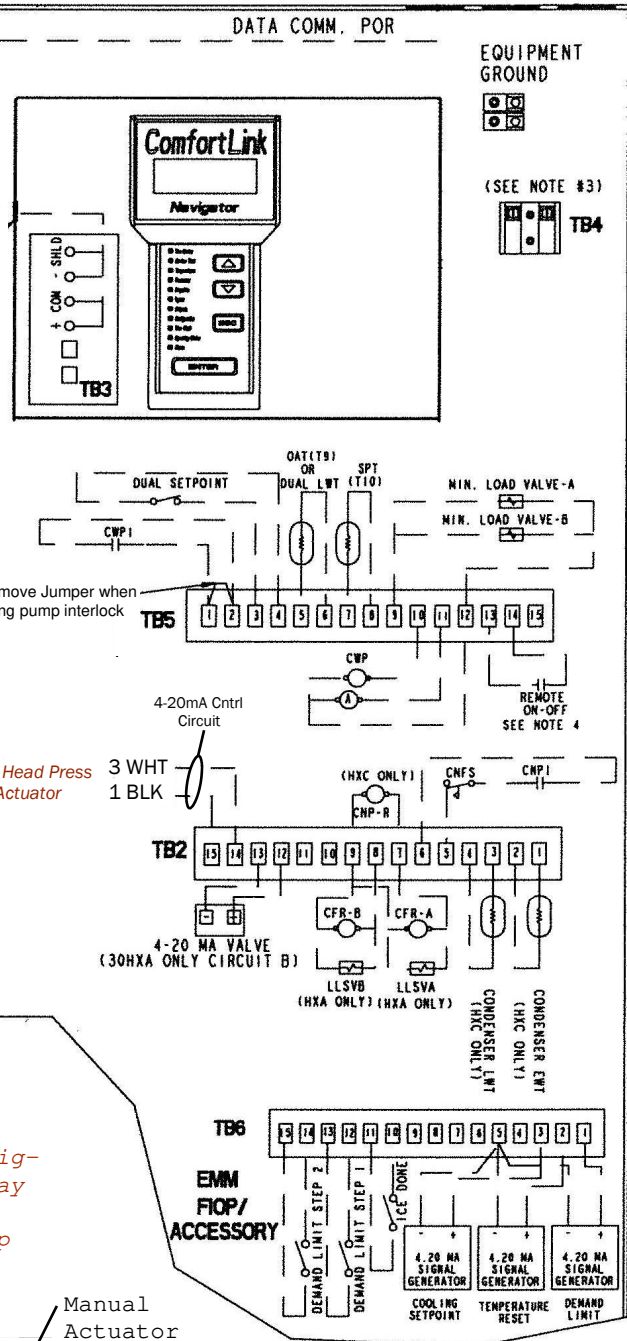


**CORRECT 3-WAY VALVE PIPING**

*During Pipe Installation, DO NOT Spin the Valve on it's B Port Axis so that it ends up as Shown*



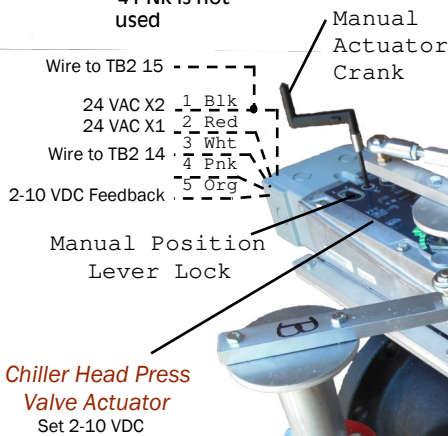
**INCORRECT 3-WAY VALVE PIPING**



To Chiller Head Press Valve Actuator

*Add 500 Ohm Resistor between 1 Blk & 3 Wht for Chiller 4-20 mA Signal or the Resistor may be located at the Chiller Terminal Strip*

\*4 PNK is not used

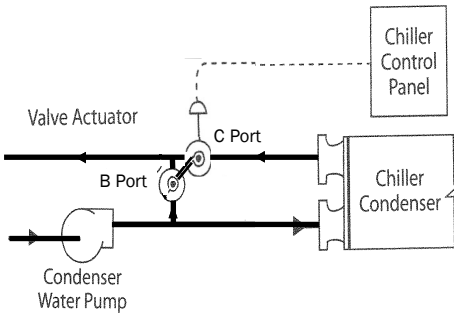
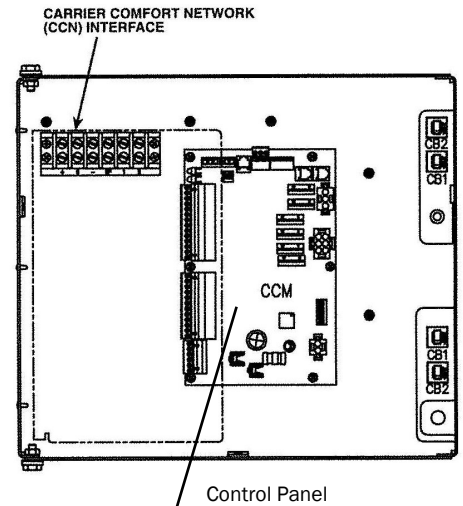
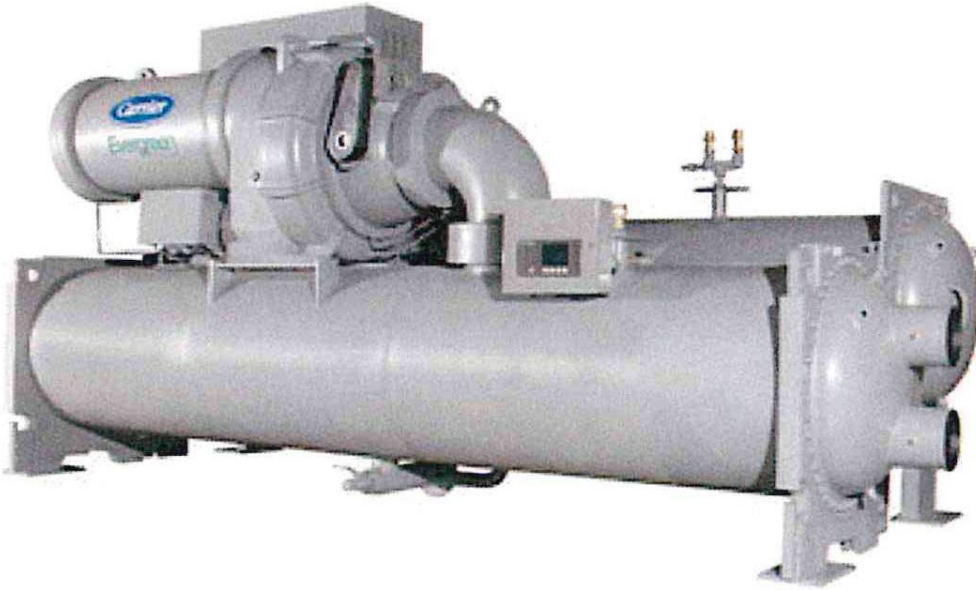


**WESLEY VALVE CO.**

MFGRS OF AUTOMATED BUTTERFLY VALVES  
3229 North L Street  
Pensacola, FL 32505  
PHN: (404) 351-8744 FAX: (404) 351-9340  
[www.wesleyvalve.com](http://www.wesleyvalve.com)

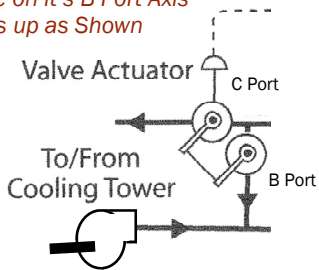
**CONDENSOR WATER VALVE**

# CARRIER 19 XR CENTRIFUGAL CHILLER HEAD PRESSURE VALVE CONTROL WIRING



**CORRECT 3-WAY VALVE PIPING**

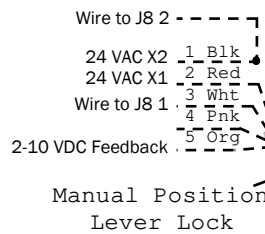
During Pipe Installation, DO NOT Spin the Valve on it's B Port Axis so that it ends up as Shown



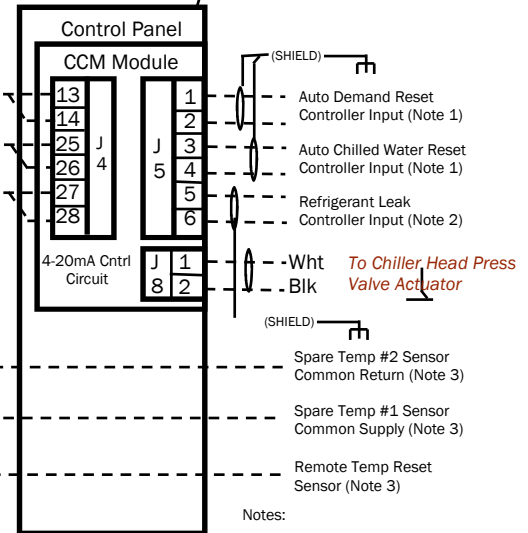
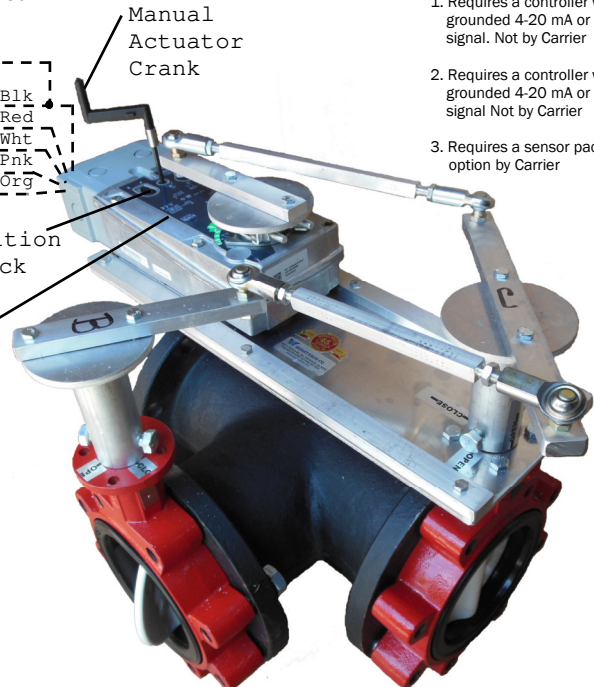
**INCORRECT 3-WAY VALVE PIPING**

Add 500 Ohm Resistor between 1 Blk & 3 Wht for Chiller 4-20 mA Signal or the Resistor may be located at the Chiller Terminal Strip

\*4 Pnk is not used



Chiller Head Press Valve Actuator  
Set 2-10 VDC



Notes:

1. Requires a controller with a non grounded 4-20 mA or 1-5 Vdc signal. Not by Carrier
2. Requires a controller with a non grounded 4-20 mA or 1-5 Vdc signal Not by Carrier
3. Requires a sensor package option by Carrier



**WESLEY VALVE CO.**

MFGRS OF AUTOMATED BUTTERFLY VALVES  
3229 North L Street  
Pensacola, FL 32505  
PHN: (404) 351-8744 FAX: (404) 351-9340  
[www.wesleyvalve.com](http://www.wesleyvalve.com)