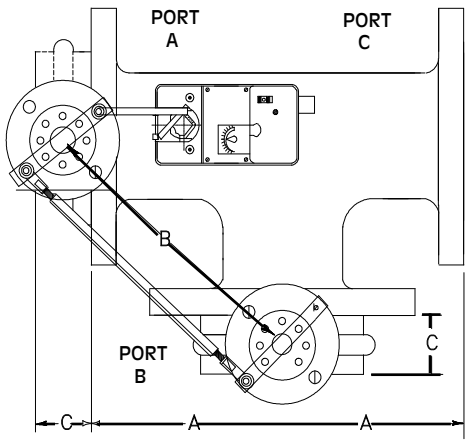
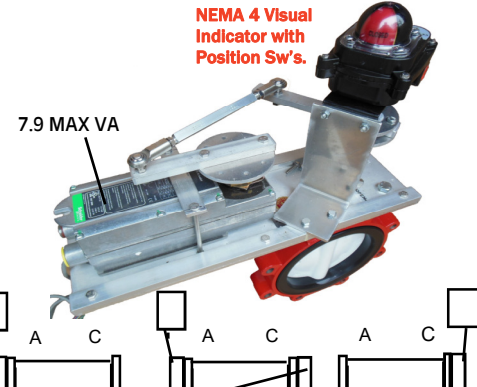
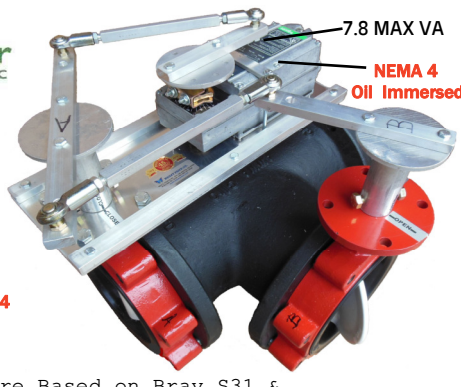
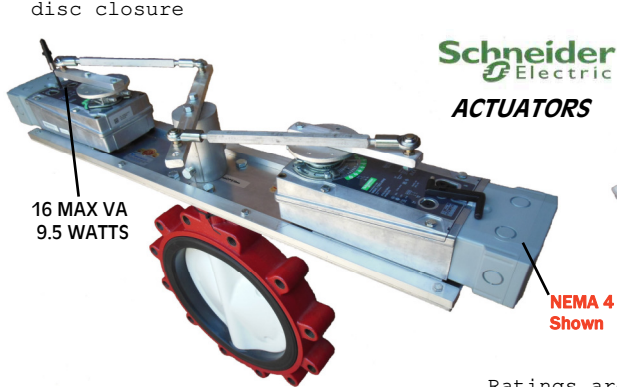


# AUTOMATED BUTTERFLY VALVES Schneider Electric SmartX ACTUATORS



System pressure is normally not a resistance factor For 3-way valve disc closure

ACTUATOR PART # * = DUAL ACTUATORS	SIZE	A DIM.	B DIM.	C DIM.	Cv	Max. Close Rating	Bubble Leak Occur.
Mx41-615x, Mx4x-715x, 717x	2	4.5	7 1/2	1 5/8	84	125	125#
Mx41-615x, Mx4x-715x, 717x	2.5	5.0	8 1/4	1 3/4	163	125	125#
Mx41-615x, Mx4x-715x, 717x	3	5.5	9 3/16	1 3/4	267	110	125#
Mx41-615x, Mx4x-715x, 717x	4	6.5	10 3/4	2.0	496	110	50#
Mx41-615x, Nx4x-715x, 717x	5	7.5	12 1/4	2 1/8	775	95	50#
Mx41-615x, Mx4x-715x, 717x	6	8.0	13 15/16	2 1/8	1025	85	50#
Mx41-634x, Mx41-730x	8	9.0	14 7/8	2 1/2	1862	85	50#
Mx41-634x, Mx41-730x	10	11	17 3/4	2 1/2	2948	75	50#
Mx41-634x, *Mx41-730x	12	12	19 3/4	3.0	4393	60	50#
*Mx41-634x, *Mx41-730x	14	14	21 3/4	3.0	5939	70	50#
*Mx41-634x, *Mx41-730x	16	15	24 3/4	4.0	7867	60	50#



For Best Modulating Control Results Valves Are Adjusted For 70 Deg Max Opening

## STANDARD VALVE BODY FEATURES

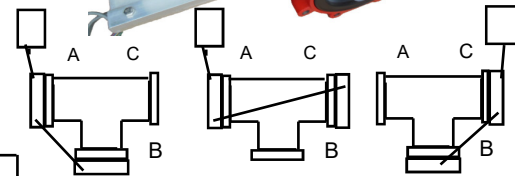
- EPDM Rubber liner
- Stainless Steel or Nylon Coated Disc
- Stainless Steel Shaft
- Full Threaded Lug
- 

Ratings are Based on Bray S31 & Pratt BF-8688-1 Valve Bodies

SIZE	CV VALUES								
2	144	84	61	43	27	16	7	1	
2.5	282	163	107	67	43	24	11	1.5	
3	461	267	154	96	61	35	15	2	
4	841	496	274	171	109	62	27	3	
5	1,376	775	428	268	170	98	43	5	
6	1,850	1,025	567	354	225	129	56	6	
8	3,316	1,862	1,081	680	421	241	102	12	
10	5,430	2,948	1,710	1,076	667	382	162	19	
12	8,077	4,393	2,563	1,594	1,005	555	235	27	
14	10,538	5,939	3,384	2,149	1,320	756	299	34	
16	13,966	7,867	4,483	2,847	1,749	1,001	397	45	

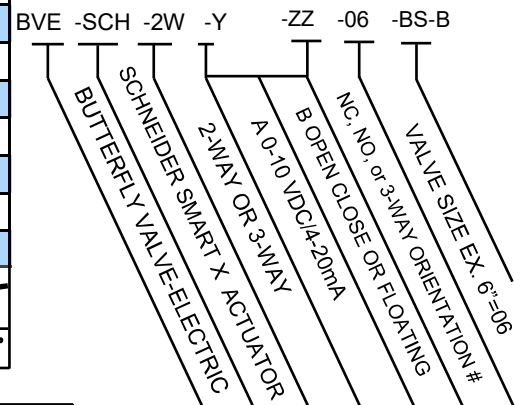
## DIMENSIONS

SIZE	A	B	D	E	F	G	H	J	K
2"	3.69	1.62	2.84	5.50	3.54	.55	.39	1.25	1.32
2.5"	4.19	1.75	3.34	6.00	3.54	.55	.39	1.25	1.91
3"	4.88	1.75	4.03	6.25	3.54	.55	.39	1.25	2.55
4"	6.06	2.00	5.16	7.00	3.54	.63	.43	1.25	3.57
5"	7.12	2.12	6.16	7.50	3.54	.75	.51	1.25	4.63
6"	8.12	2.12	7.02	8.00	3.54	.75	.51	1.25	5.45
8"	10.50	2.50	9.47	9.50	5.91	.87	.63	1.25	7.45
10"	12.75	2.50	11.47	10.75	5.91	1.18	.87	2.00	9.53
12"	14.88	3.00	9.47	9.50	5.91	1.18	.87	2.00	11.47
14"	17.05	3.00	15.28	13.62	5.91	1.38	N/A	2.00	13.04
16"	19.21	4.00	17.41	14.75	5.91	1.38	N/A	2.00	14.85



- 2: A CLOSED B OPEN
- 3: A OPEN B CLOSED
- 4: A CLOSED C OPEN
- 5: A OPEN C CLOSED
- 6: C CLOSED B OPEN
- 7: C OPEN B CLOSED

## 3-WAY VALVE ORIENTATIONS



## Part Numbering System

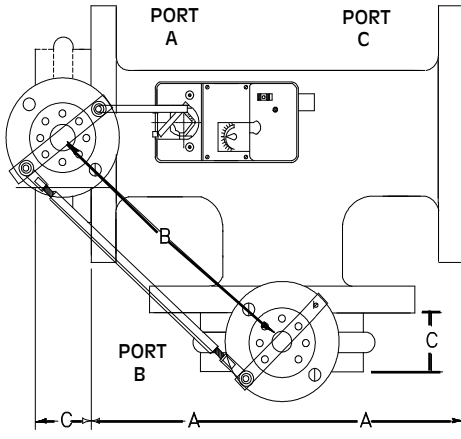
BS = Valve Bump Switch  
VPI = Visual Pos Indicator  
Aux = Actuator Aux Sw  
SR = Spring Return  
B = Bray P = Pratt  
WP = NEMA 4 WeatherProof



## WESLEY VALVE CO.

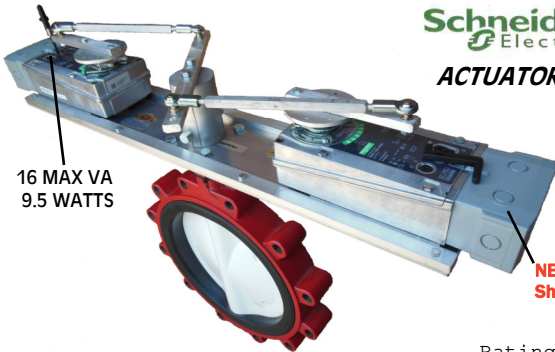
MFGRS OF AUTOMATED BUTTERFLY VALVES  
3229 North L Street  
Pensacola, FL 32505  
PHN: (404) 351-8744  
FAX: (404) 351-9340  
[www.wesleyvalve.com](http://www.wesleyvalve.com)

# AUTOMATED BUTTERFLY VALVES Schneider Electric SmartX ACTUATORS



ACTUATOR PART # * = DUAL ACTUATORS	SIZE	A DIM.	B DIM.	C DIM.	Cv	Max. Close Rating	Bubble Leak Occur.
Mx41-615x, Mx4x-715x, 717x	2	4.5	7 1/2	1 5/8	84	125	125#
Mx41-615x, Mx4x-715x, 717x	2.5	5.0	8 1/4	1 3/4	163	125	125#
Mx41-615x, Mx4x-715x, 717x	3	5.5	9 3/16	1 3/4	267	110	125#
Mx41-615x, Mx4x-715x, 717x	4	6.5	10 3/4	2.0	496	70	125#
Mx41-634x, Mx41-730x	5	7.5	12 1/4	2 1/8	775	100	125#
Mx41-634x, Mx41-730x	6	8.0	13 15/16	2 1/8	1025	100	125#
Mx41-634x, Mx41-730x	8	9.0	14 7/8	2 1/2	1862	50	125#
*Mx41-634x, *Mx41-730x	10	11	17 3/4	2 1/2	2948	70	125#
*Mx41-634x, *Mx41-730x	12	12	19 3/4	3.0	4393	50	125#

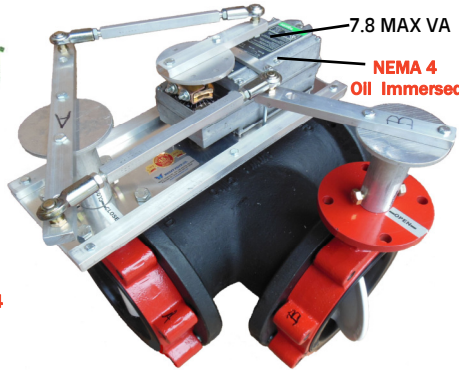
System pressure is normally not a resistance factor For 3-way valve disc closure



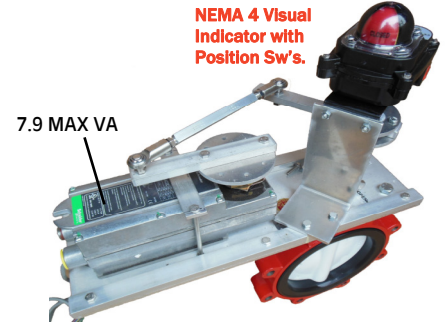
16 MAX VA  
9.5 WATTS

Schneider Electric  
**ACTUATORS**

NEMA 4  
Shown



7.8 MAX VA  
NEMA 4  
Oil Immersed



7.9 MAX VA

NEMA 4 Visual  
Indicator with  
Position Sw's.

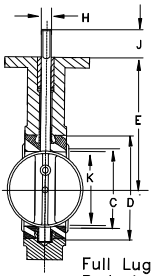
For Best Modulating Control Results Valves Are Adjusted For 70 Deg Max Opening

Ratings are Based on Bray S31 & Pratt BF-8688-1 Valve Bodies

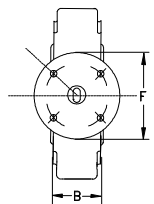
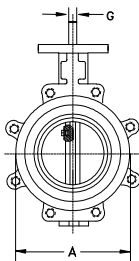
## STANDARD VALVE BODY FEATURES

- EPDM Rubber liner
- Stainless Steel or Nylon Coated Disc
- Stainless Steel Shaft
- Full Threaded Lug
- 

SIZE	CV VALUES							
2	144	84	61	43	27	16	7	1
2.5	282	163	107	67	43	24	11	1.5
3	461	267	154	96	61	35	15	2
4	841	496	274	171	109	62	27	3
5	1,376	775	428	268	170	98	43	5
6	1,850	1,025	567	354	225	129	56	6
8	3,316	1,862	1,081	680	421	241	102	12
10	5,430	2,948	1,710	1,076	667	382	162	19
12	8,077	4,393	2,563	1,594	1,005	555	235	27



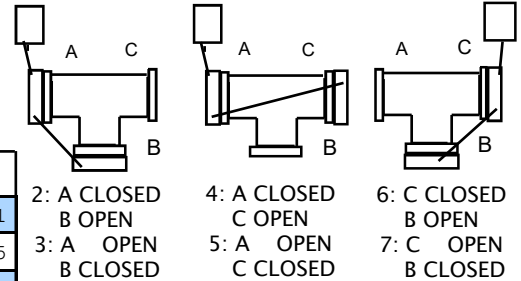
Full Lug Body is Standard



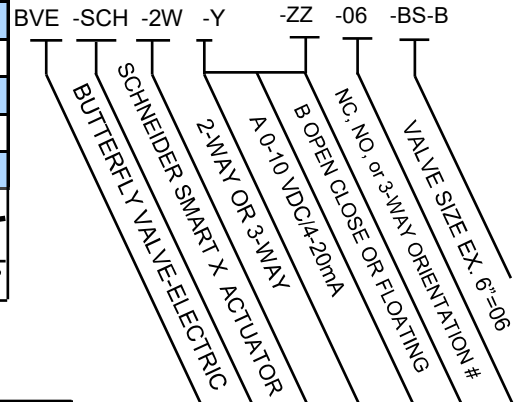
## DIMENSIONS

SIZE	A	B	D	E	F	G	H	J	K
2"	3.69	1.62	2.84	5.50	3.54	.55	.39	1.25	1.32
2.5"	4.19	1.75	3.34	6.00	3.54	.55	.39	1.25	1.91
3"	4.88	1.75	4.03	6.25	3.54	.55	.39	1.25	2.55
4"	6.06	2.00	5.16	7.00	3.54	.63	.43	1.25	3.57
5"	7.12	2.12	6.16	7.50	3.54	.75	.51	1.25	4.63
6"	8.12	2.12	7.02	8.00	3.54	.75	.51	1.25	5.45
8"	10.50	2.50	9.47	9.50	5.91	.87	.63	1.25	7.45
10"	12.75	2.50	11.47	10.75	5.91	1.18	.87	2.00	9.53
12"	14.88	3.00	9.47	9.50	5.91	1.18	.87	2.00	11.47

Full Cut Valve Bodies



## 3-WAY VALVE ORIENTATIONS



Part Numbering System  
BS = Valve Bump Switch  
VPI = Visual Pos Indicator  
Aux = Actuator Aux Sw  
SR = Spring Return  
B = Bray P = Pratt  
WP = NEMA 4 WeatherProof

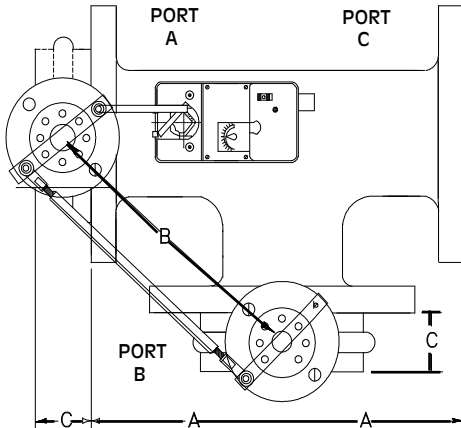


## WESLEY VALVE CO.

MFGRS OF AUTOMATED BUTTERFLY VALVES  
3229 North L Street  
Pensacola, FL 32505  
PHN: (404) 351-8744  
FAX: (404) 351-9340

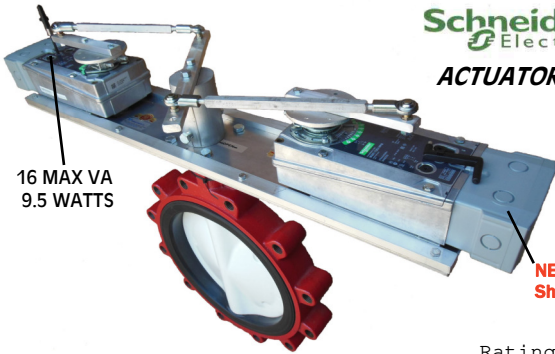
[www.wesleyvalve.com](http://www.wesleyvalve.com)

# AUTOMATED BUTTERFLY VALVES Schneider Electric SmartX ACTUATORS



ACTUATOR PART # * = DUAL ACTUATORS	SIZE	A DIM.	B DIM.	C DIM.	Cv	Max. Close Rating	Bubble Leak Occur.
Mx41-634x, Mx41-730x	2	4.5	7 1/2	1 5/8	84	125	125#
Mx41-634x, Mx41-730x	2.5	5.0	8 1/4	1 3/4	163	125	125#
Mx41-634x, Mx41-730x	3	5.5	9 3/16	1 3/4	267	125	125#
Mx41-634x, Mx41-730x	4	6.5	10 3/4	2.0	496	100	125#
Mx41-634x, Mx41-730x	5	7.5	12 1/4	2 1/8	775	100	125#
Mx41-634x, Mx41-730x	6	8.0	13 15/16	2 1/8	1025	100	125#
*Mx41-634x, *Mx41-730x	8	9.0	14 7/8	2 1/2	1862	50	125#
*Mx41-634x, *Mx41-730x	10	11	17 3/4	2 1/2	2948	70	125#
*Mx41-634x, *Mx41-730x	12	12	19 3/4	3.0	4393	50	125#

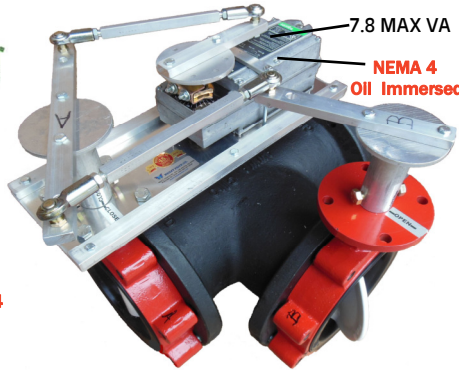
System pressure is normally not a resistance factor For 3-way valve disc closure



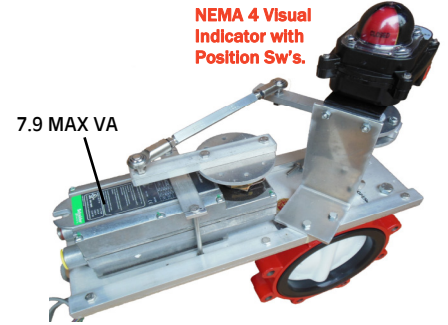
16 MAX VA  
9.5 WATTS

Schneider Electric  
**ACTUATORS**

NEMA 4  
Shown



7.8 MAX VA  
NEMA 4  
Oil Immersed



7.9 MAX VA

NEMA 4 Visual  
Indicator with  
Position Sw's.

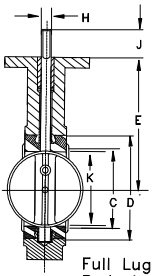
For Best Modulating Control Results Valves Are Adjusted For 70 Deg Max Opening

Ratings are Based on Bray S31 & Pratt BF-8688-1 Valve Bodies

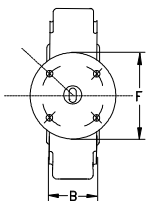
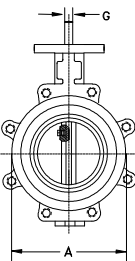
## STANDARD VALVE BODY FEATURES

- EPDM Rubber liner
- Stainless Steel or Nylon Coated Disc
- Stainless Steel Shaft
- Full Threaded Lug
- 

SIZE	CV VALUES							
2	144	84	61	43	27	16	7	1
2.5	282	163	107	67	43	24	11	1.5
3	461	267	154	96	61	35	15	2
4	841	496	274	171	109	62	27	3
5	1,376	775	428	268	170	98	43	5
6	1,850	1,025	567	354	225	129	56	6
8	3,316	1,862	1,081	680	421	241	102	12
10	5,430	2,948	1,710	1,076	667	382	162	19
12	8,077	4,393	2,563	1,594	1,005	555	235	27



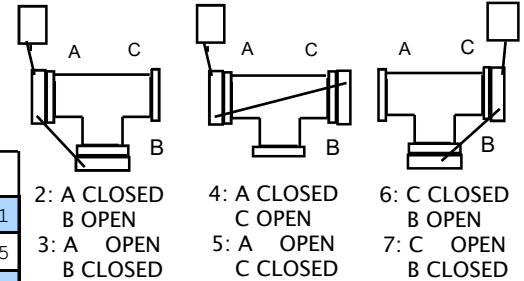
Full Lug Body is Standard



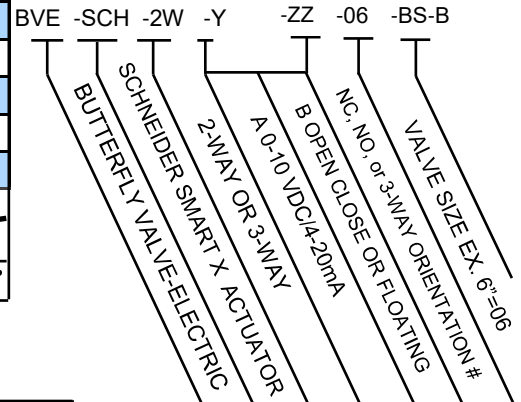
## DIMENSIONS

SIZE	A	B	D	E	F	G	H	J	K
2"	3.69	1.62	2.84	5.50	3.54	.55	.39	1.25	1.32
2.5"	4.19	1.75	3.34	6.00	3.54	.55	.39	1.25	1.91
3"	4.88	1.75	4.03	6.25	3.54	.55	.39	1.25	2.55
4"	6.06	2.00	5.16	7.00	3.54	.63	.43	1.25	3.57
5"	7.12	2.12	6.16	7.50	3.54	.75	.51	1.25	4.63
6"	8.12	2.12	7.02	8.00	3.54	.75	.51	1.25	5.45
8"	10.50	2.50	9.47	9.50	5.91	.87	.63	1.25	7.45
10"	12.75	2.50	11.47	10.75	5.91	1.18	.87	2.00	9.53
12"	14.88	3.00	9.47	9.50	5.91	1.18	.87	2.00	11.47

Full Cut Valve Bodies with 270 in/lb Actuators



## 3-WAY VALVE ORIENTATIONS



Part Numbering System  
BS = Valve Bump Switch  
VPI = Visual Pos Indicator  
Aux = Actuator Aux Sw  
SR = Spring Return  
B = Bray P = Pratt  
WP = NEMA 4 WeatherProof



## WESLEY VALVE CO.

MFGRS OF AUTOMATED BUTTERFLY VALVES  
3229 North L Street  
Pensacola, FL 32505  
PHN: (404) 351-8744  
FAX: (404) 351-9340

[www.wesleyvalve.com](http://www.wesleyvalve.com)